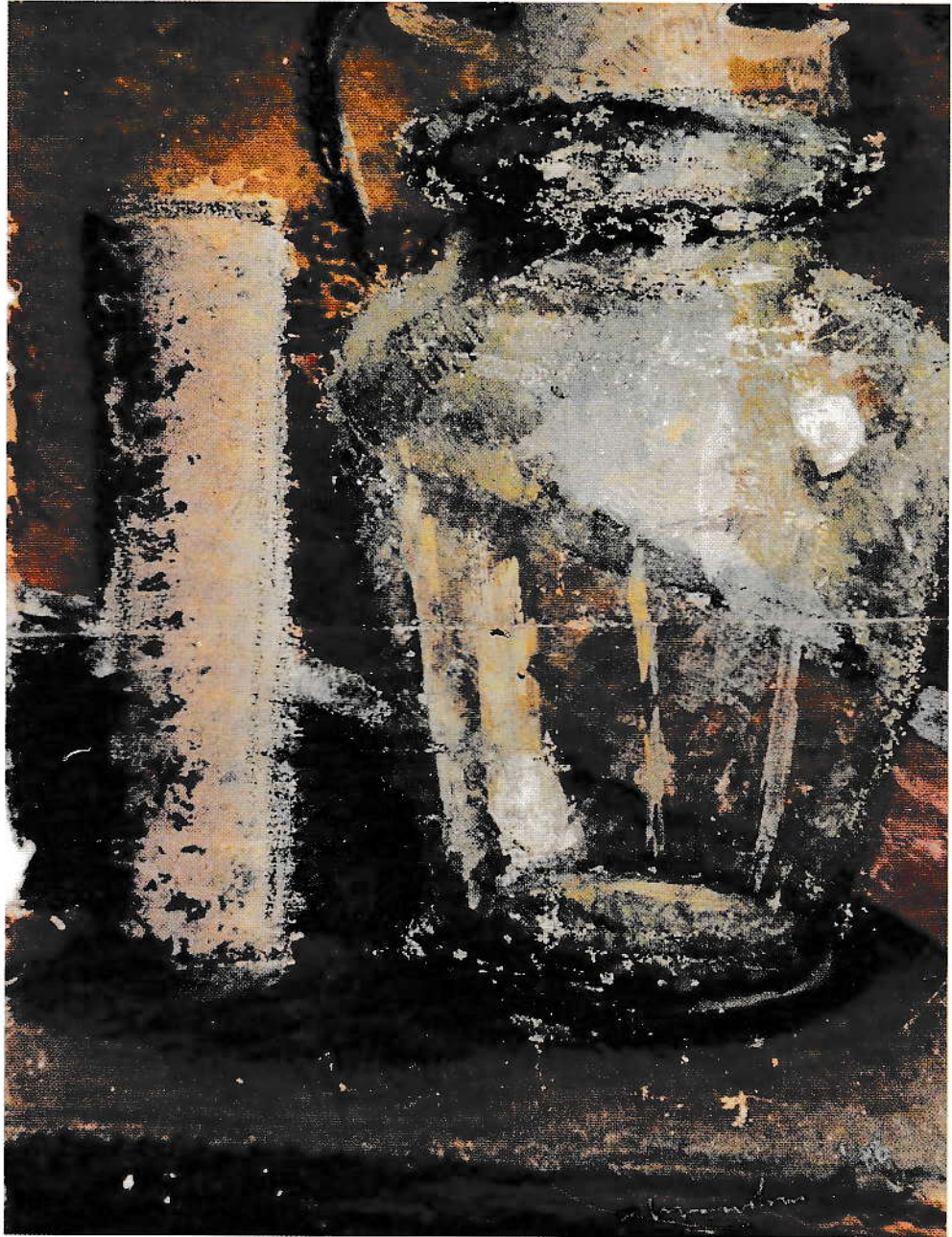


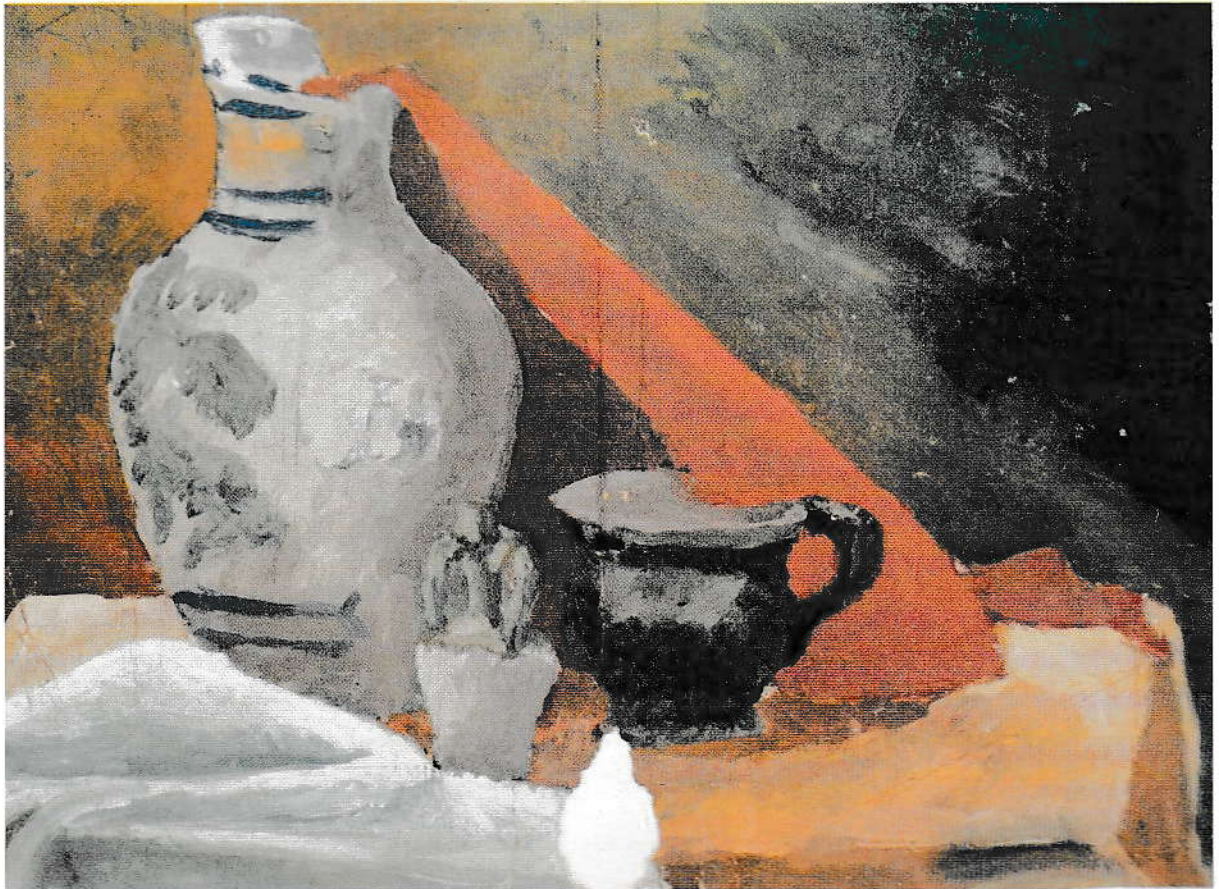
TAVOLE



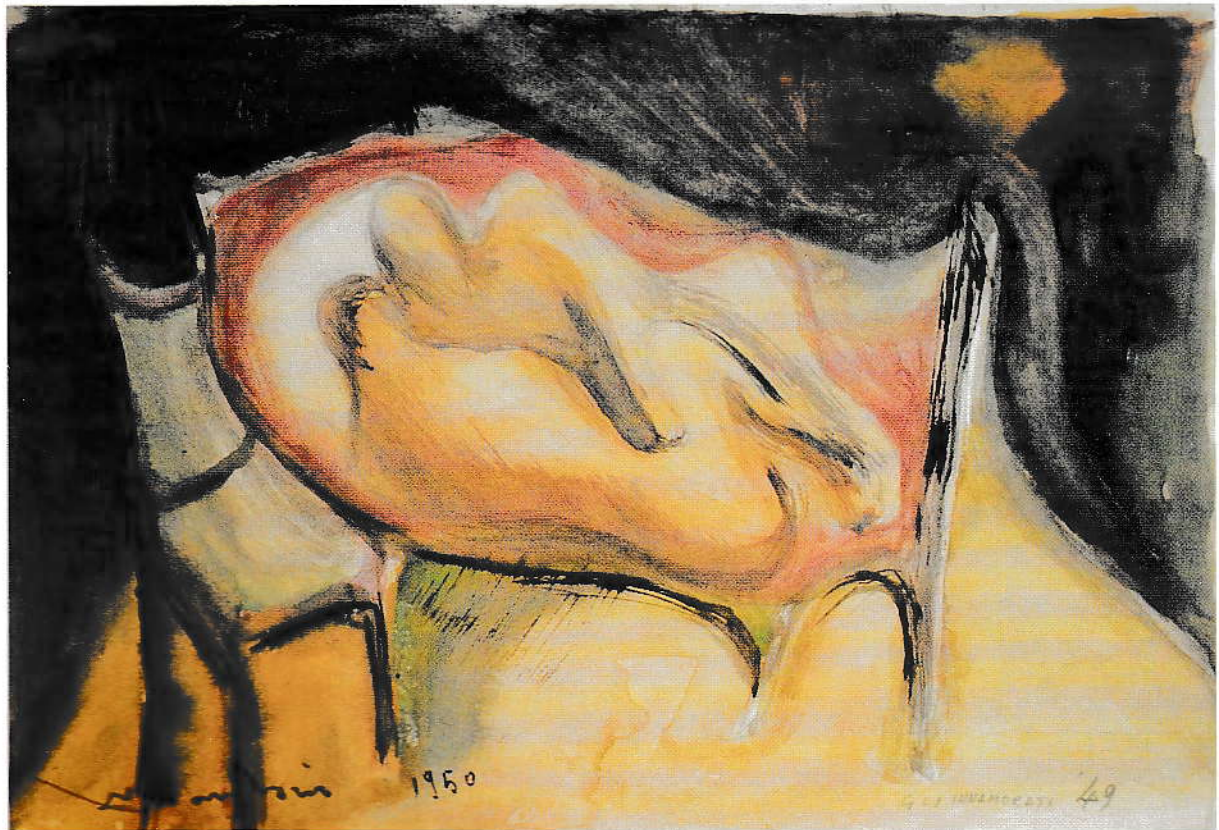
Facciata con pini, 1946, tempera, cm. 29x20



Vaso trasparente, 1946, tempera, cm. 27x20



Vaso con stoffa rossa, 1947, cm. 45x33



Gli innamorati, 1949, tempera acquerellata, cm. 33x22



Paesaggio (omaggio a Ciardo), 1952, pastello, cm. 17x12

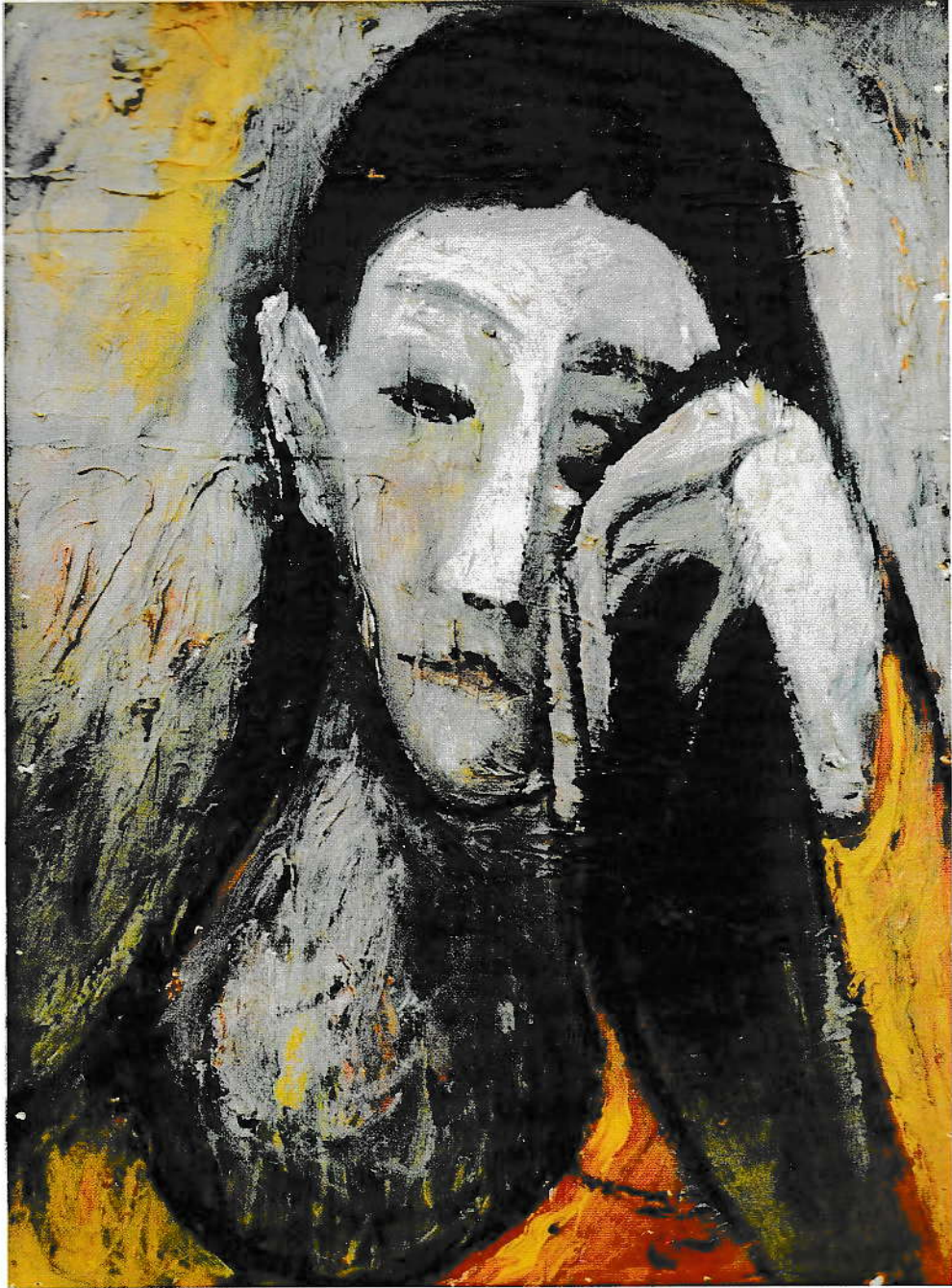
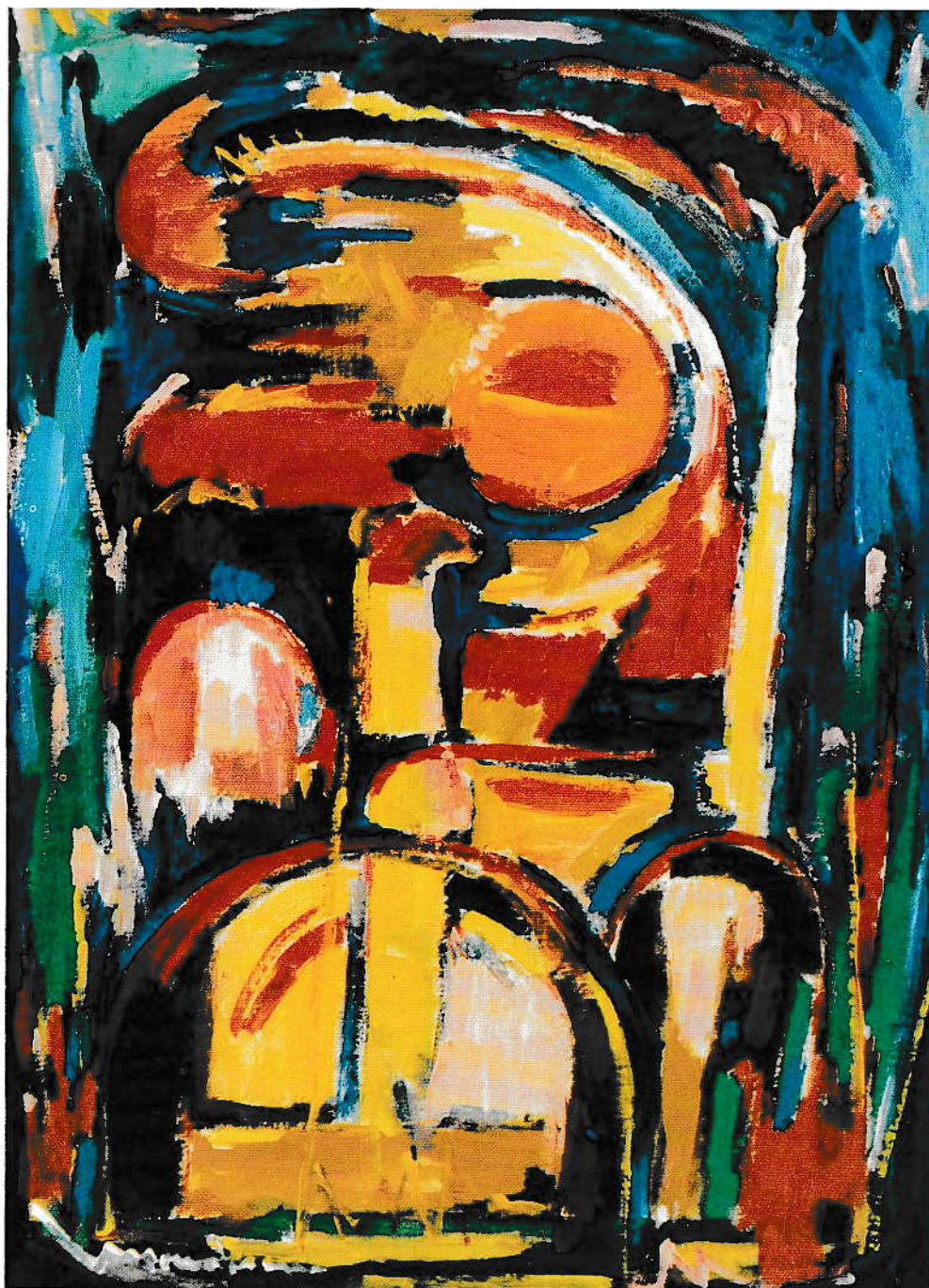
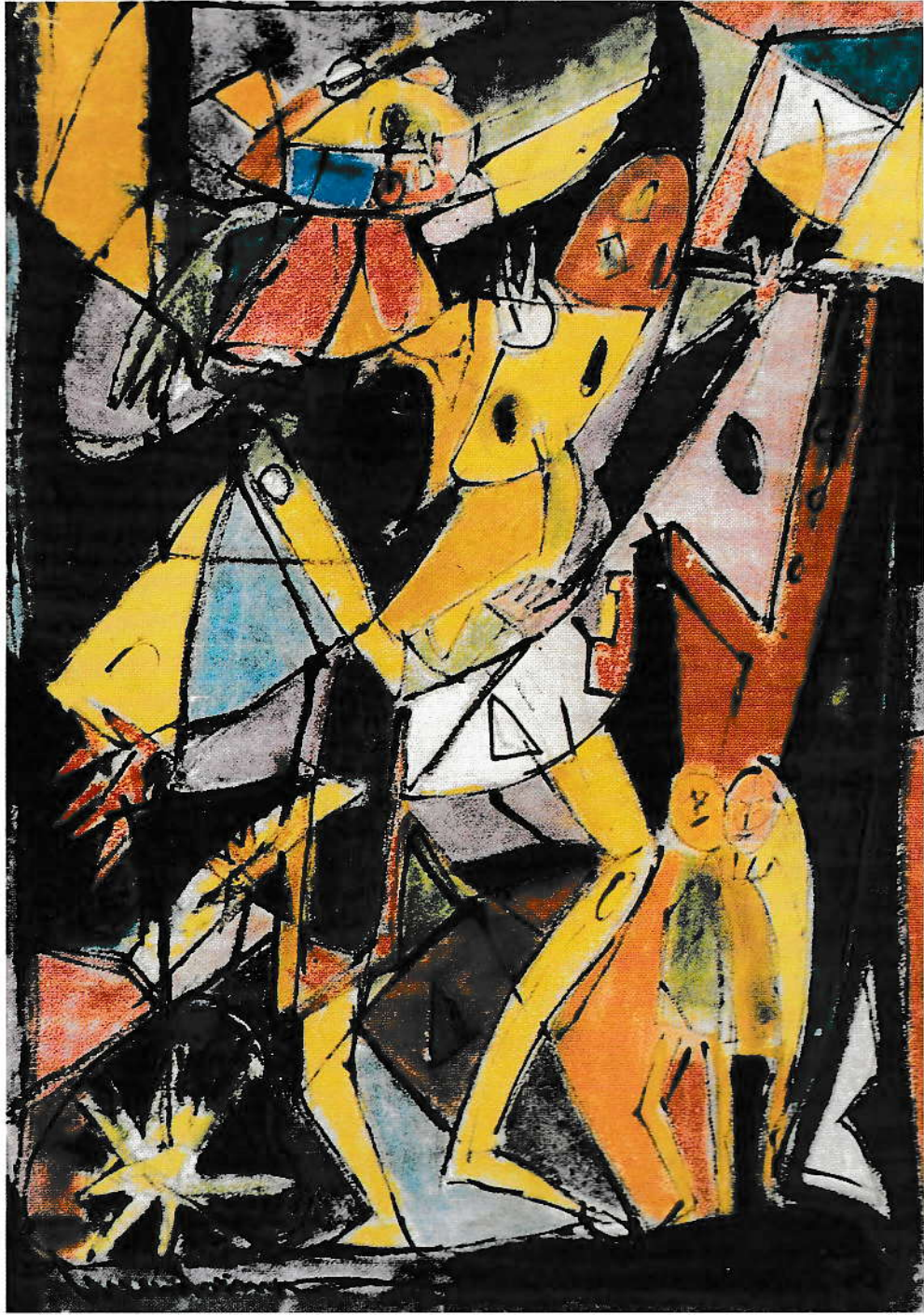


Figura (omaggio a Modigliani), 1952, olio su cartone telato, cm. 30x40

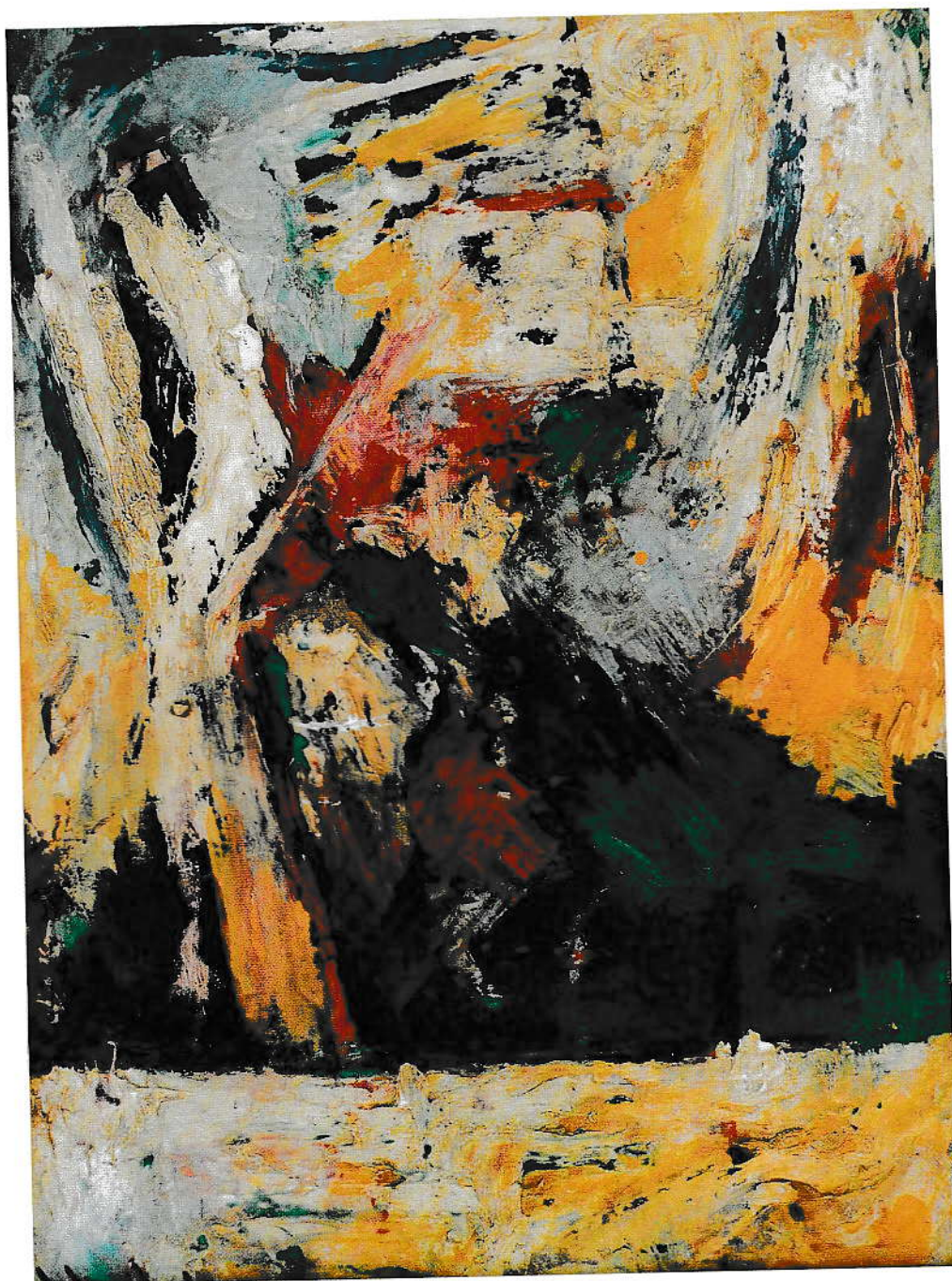


Dinamica industriale, 1958, olio su cartone telato, cm. 50x70

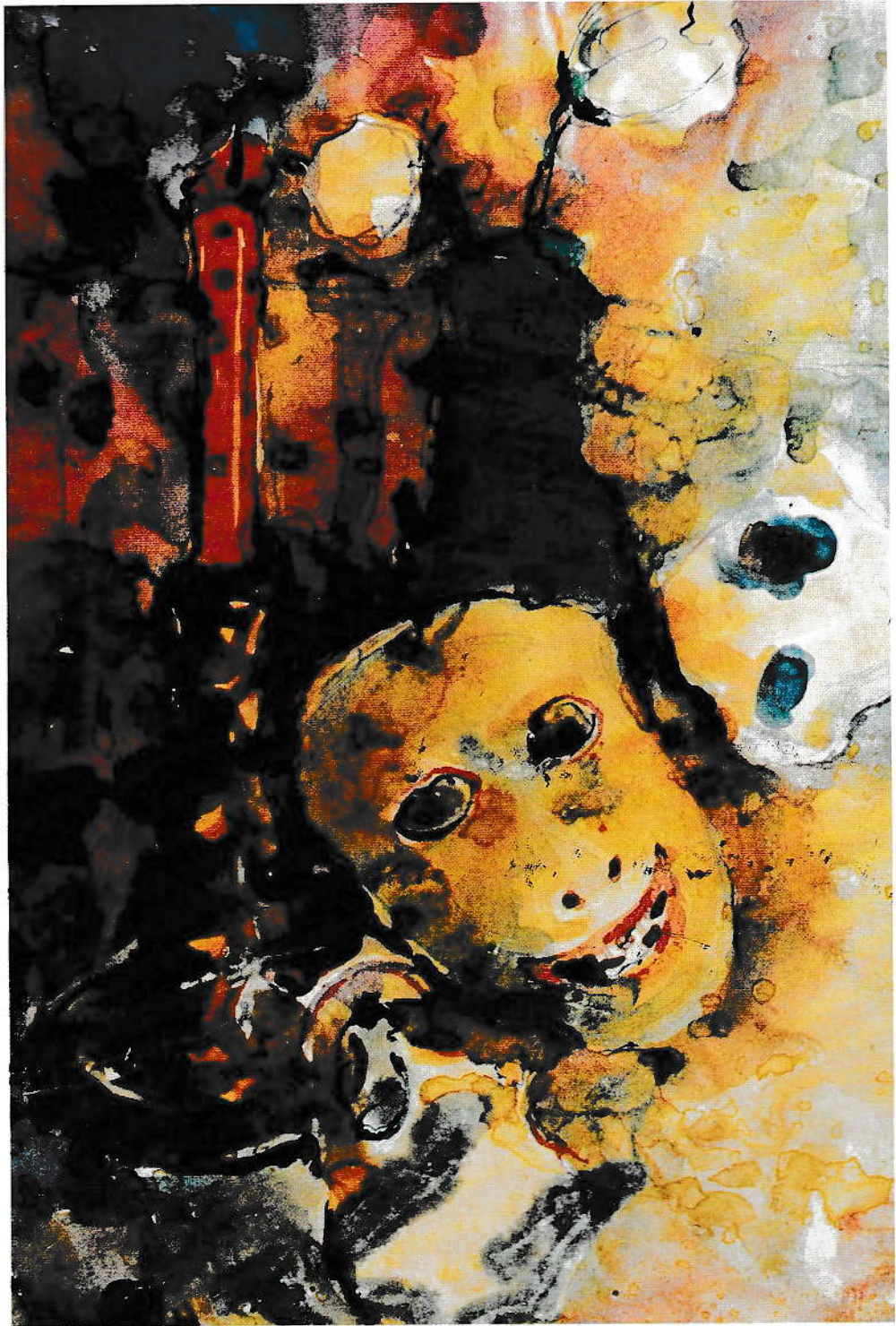


L'artista nello studio, dicembre 1959, pastello, cm. 45x65





La dinamica dei valori plastici - Paesaggio, dicembre 1959, olio su compensato, cm. 43x59



Ricordo di carnevale, 1963, acquerello, cm. 21x31



Paesaggio materico, 1965, olio su tela, cm. 50x40



Enucleazione, 1968, olio su tela, cm. 80x60



I Farisei, 1971, olio su tela, cm. 80x90

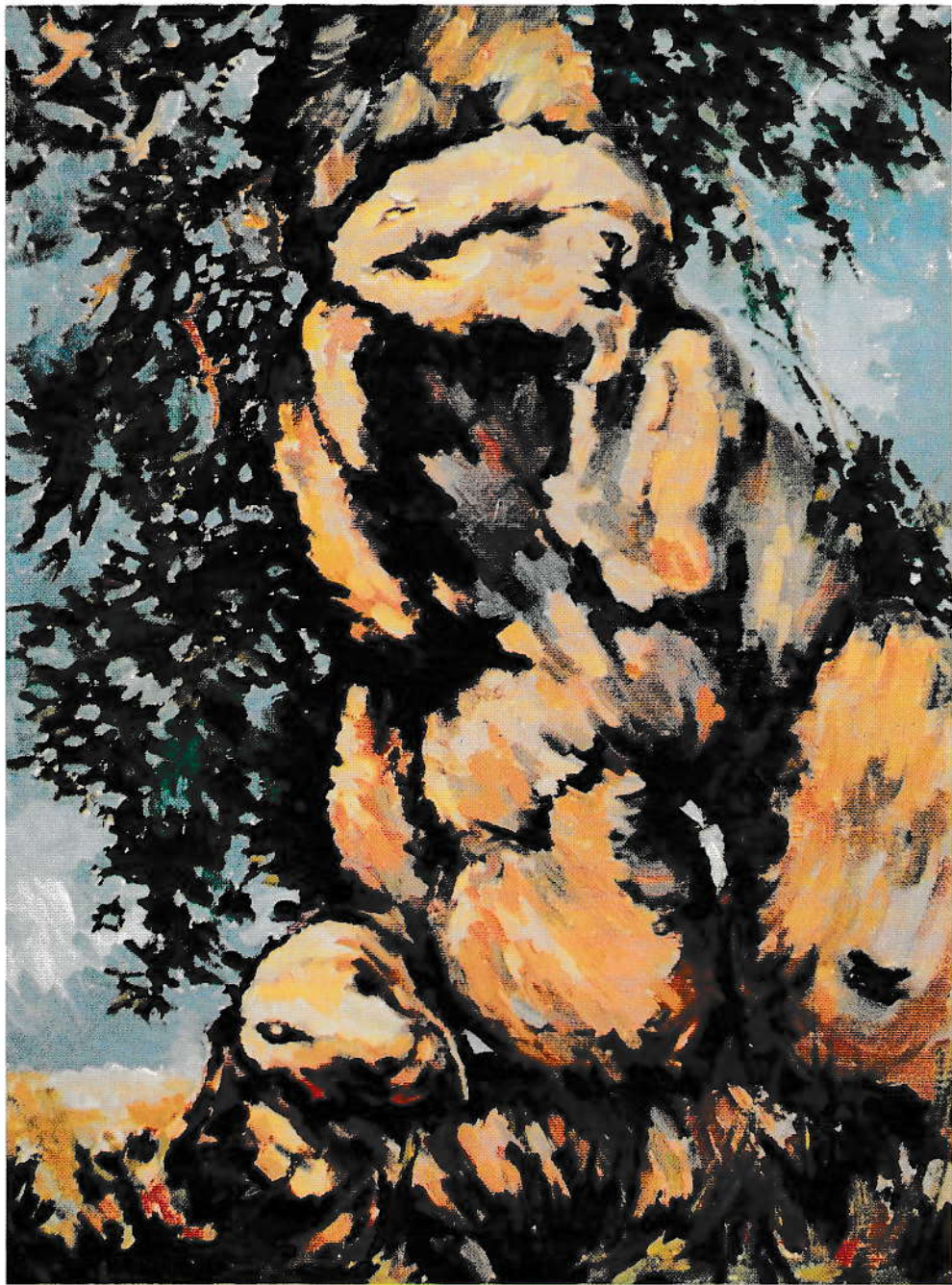
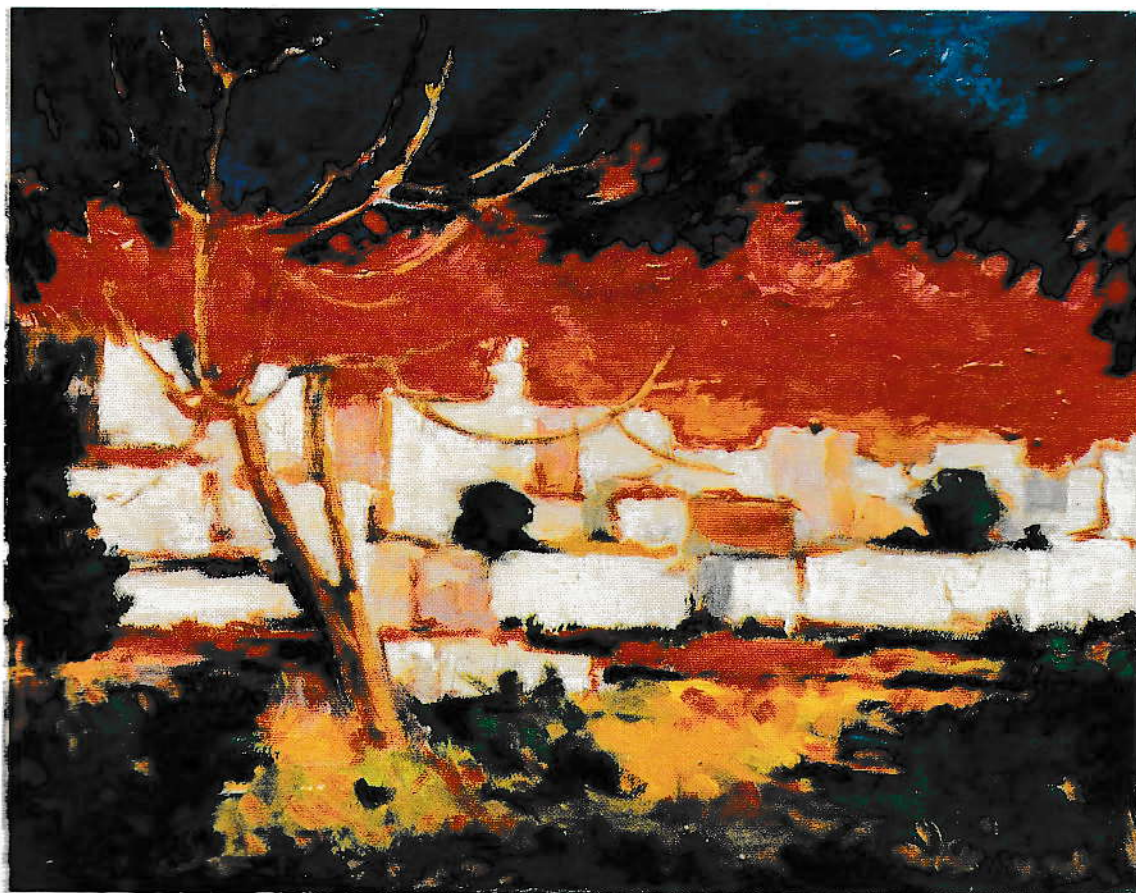


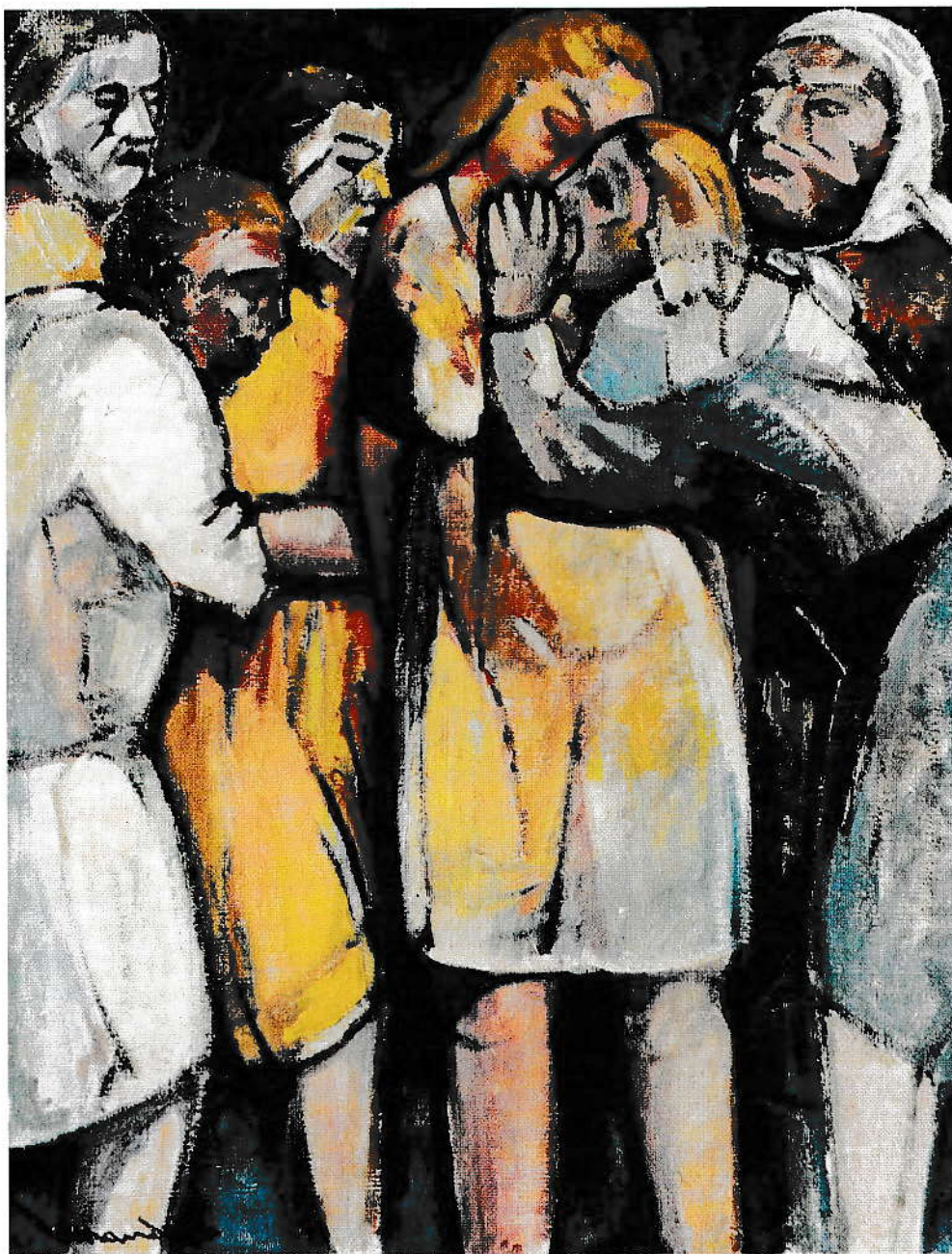
Figura di ulivo, 1973, olio su tela, cm. 60x80



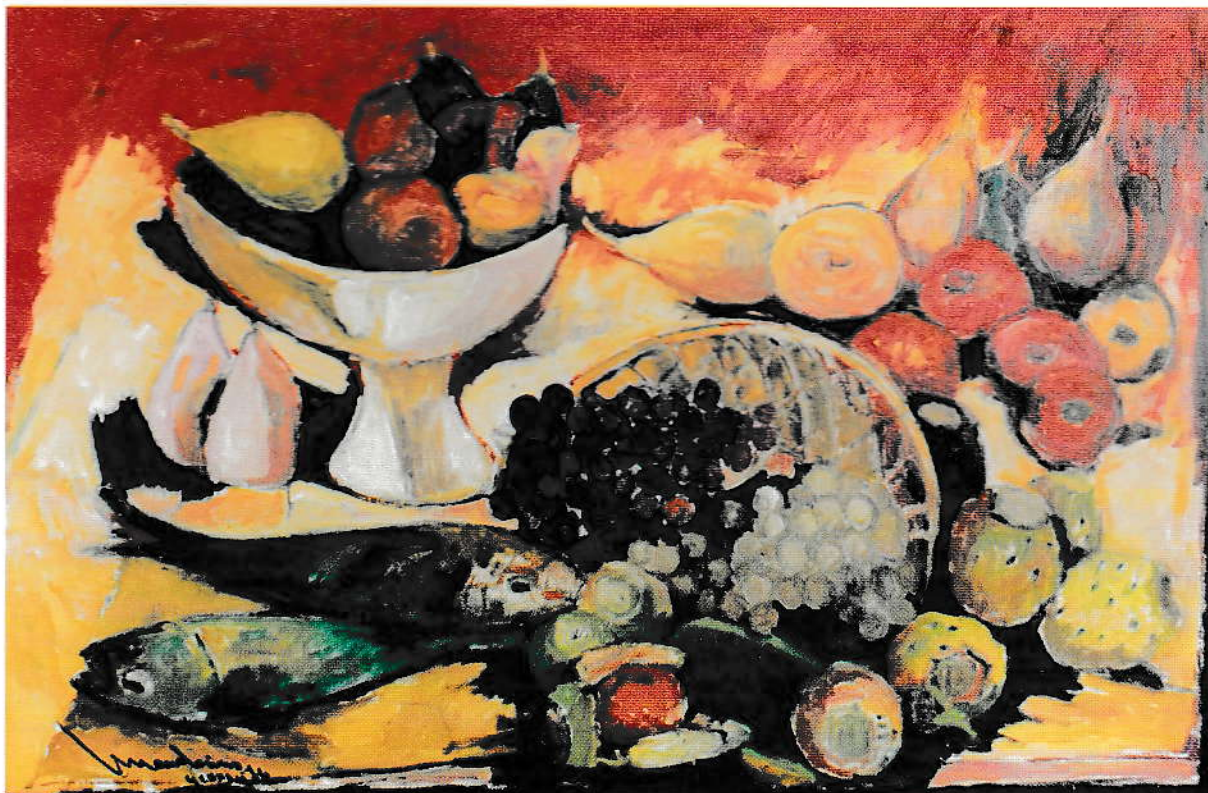
Fiori e frutta dietro la persiana, 1973, olio su tela, cm. 80x60



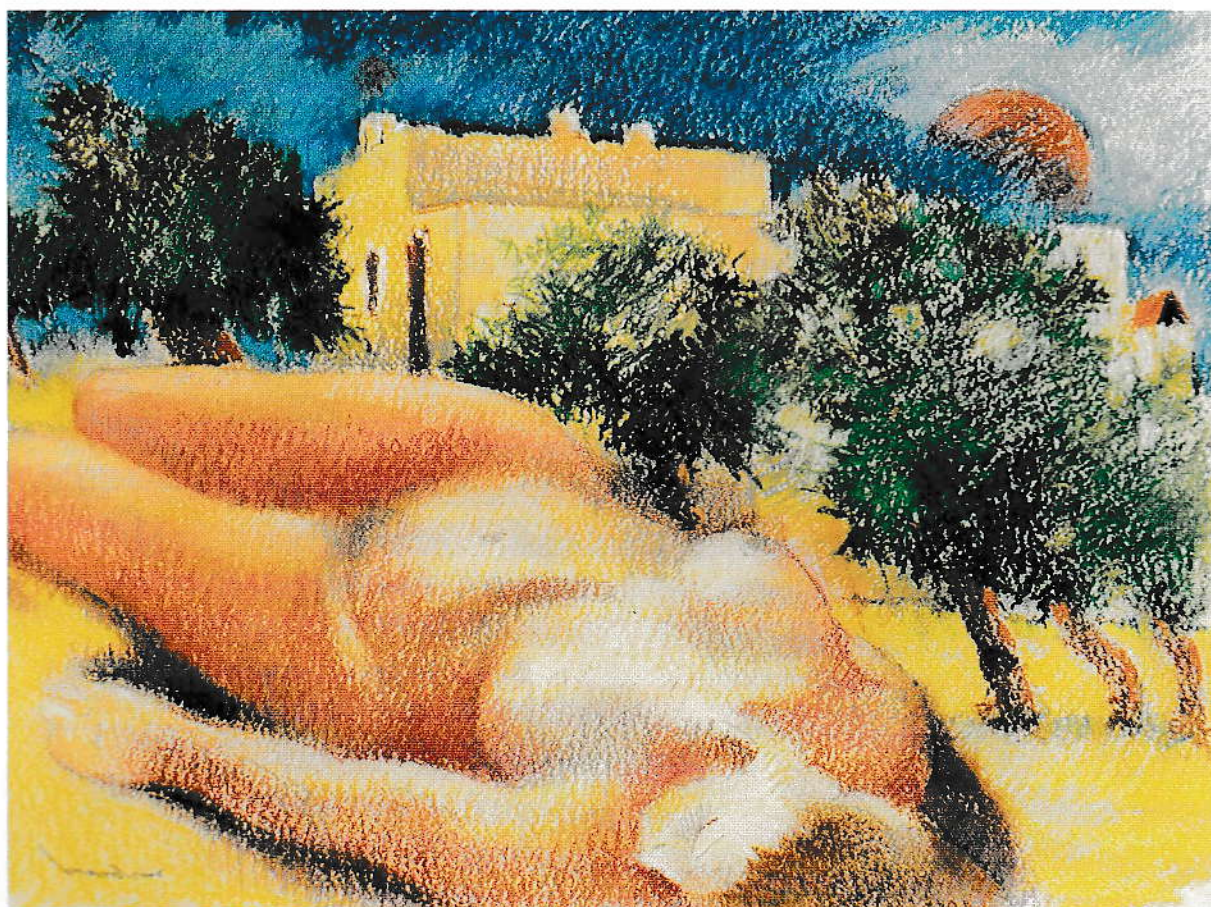
Case senza porte, 1975, olio su tela, cm. 50x40



Il ritorno dell'emigrante, 1976, olio su tela, cm. 60x80

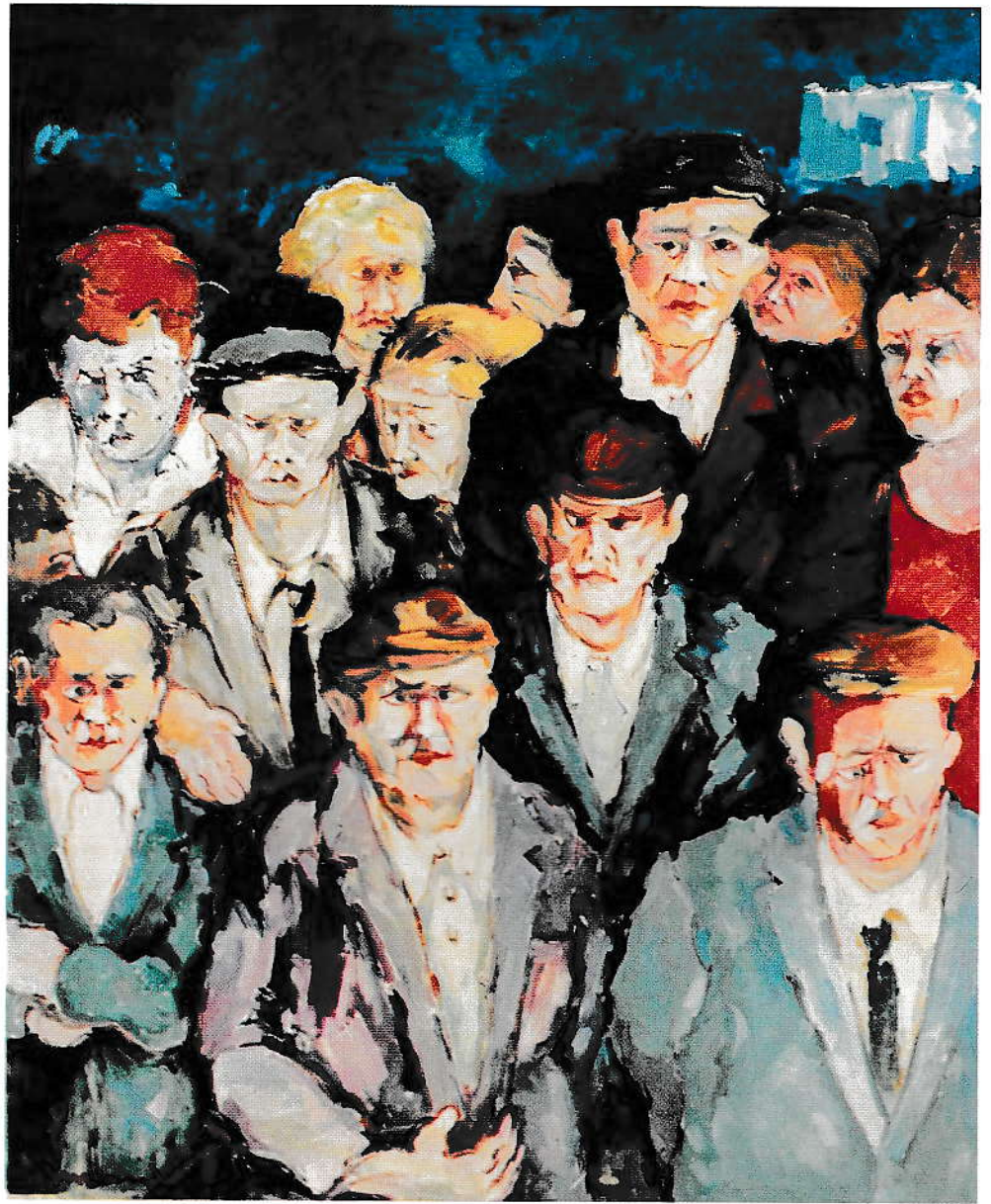


Natura morta con pesci, 1976, olio su tela, cm. 120x80

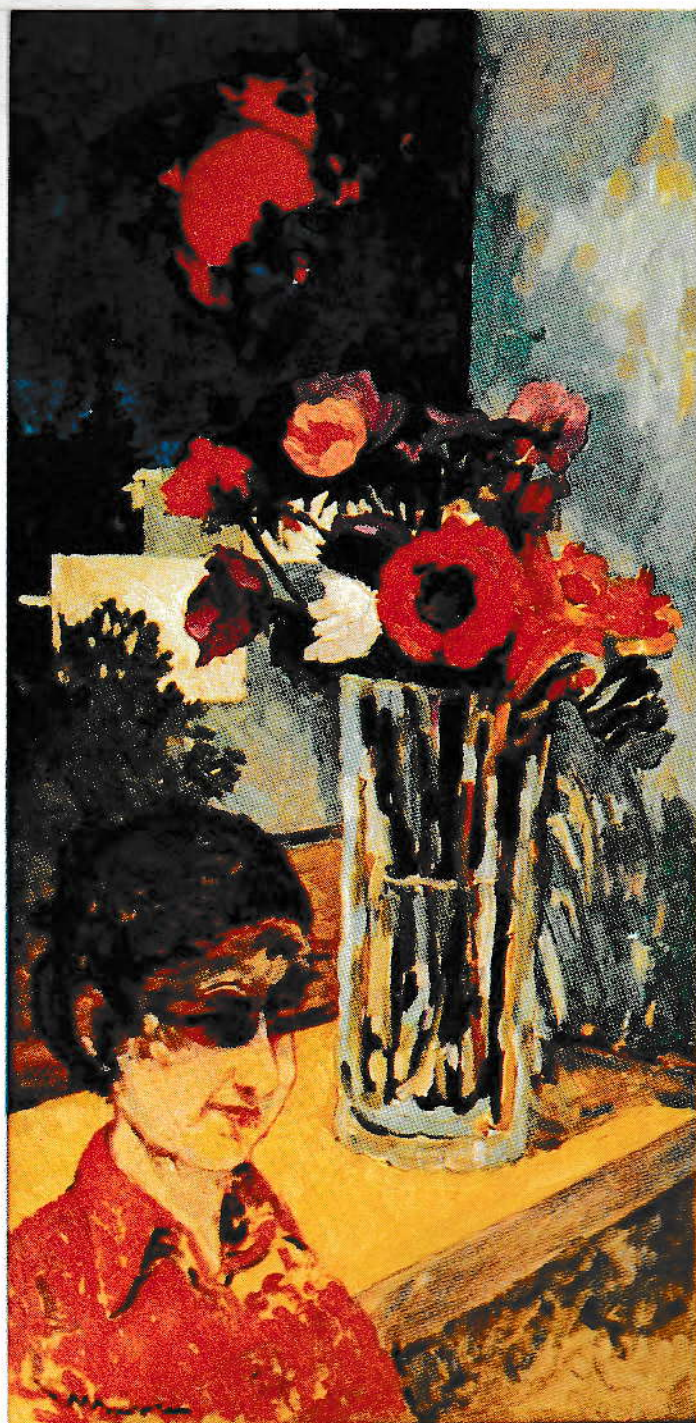


Natura, 1976, pastello, cm. 52x60





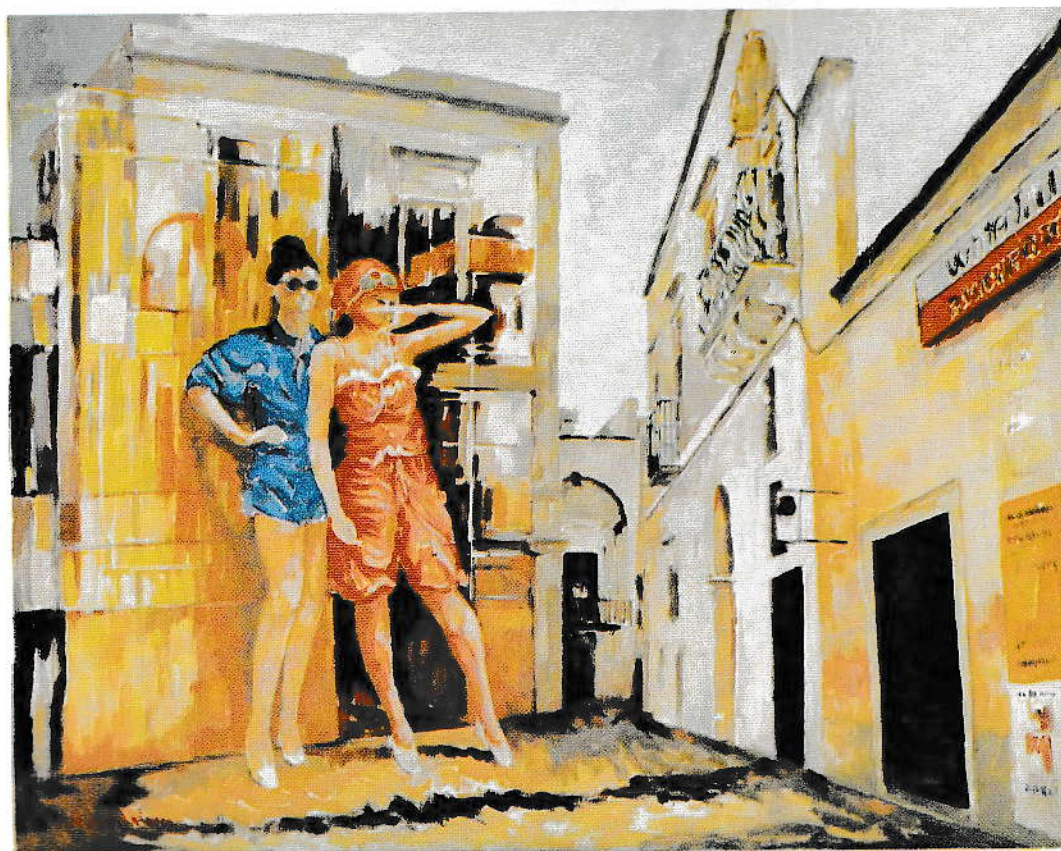
Gente del Sud, 1978, olio su tela, cm. 80x100



Omaggio a mia figlia, 1980, olio su tela, cm. 50x100



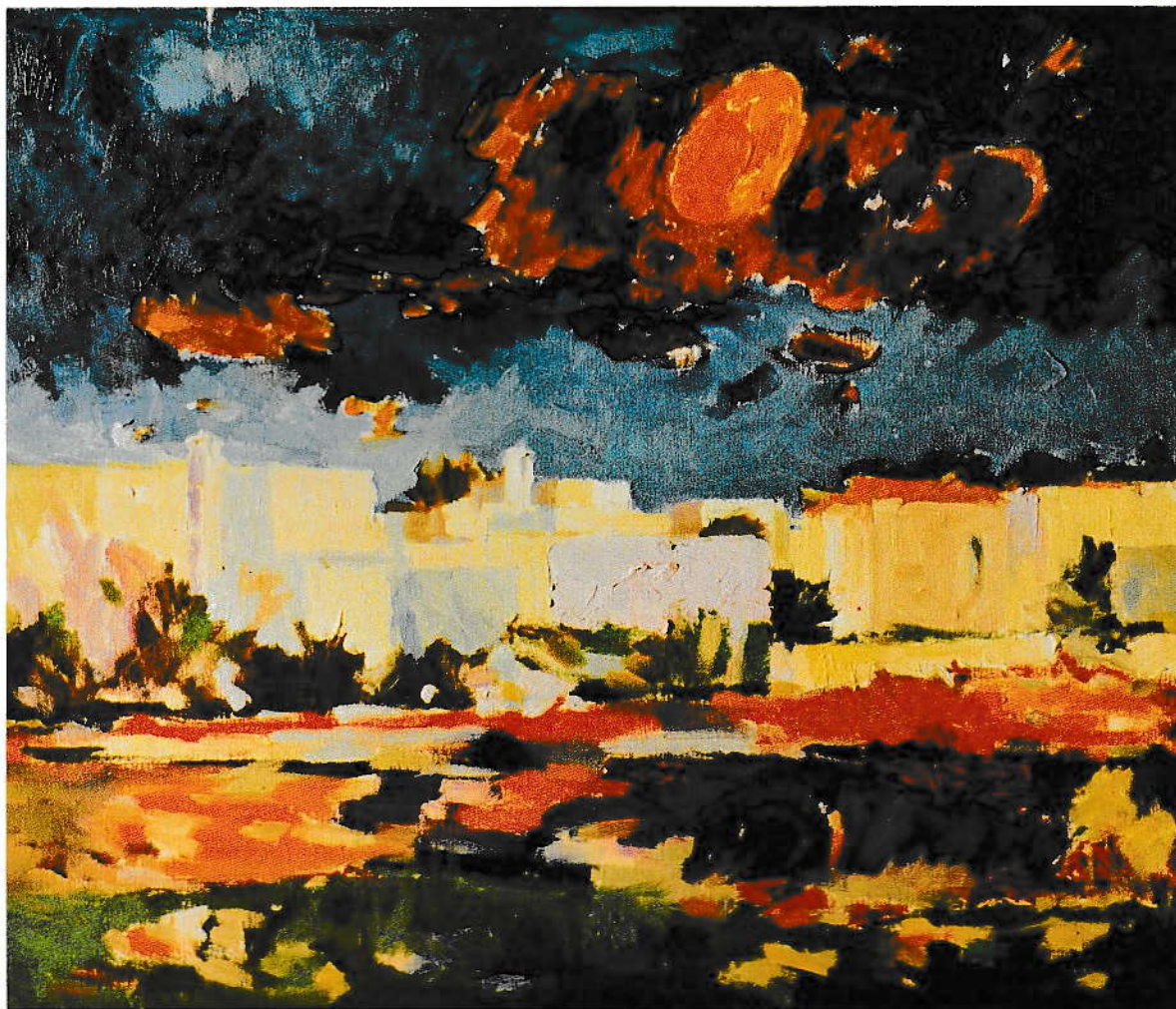
Generazione, 1980, olio su tela, cm. 100x80



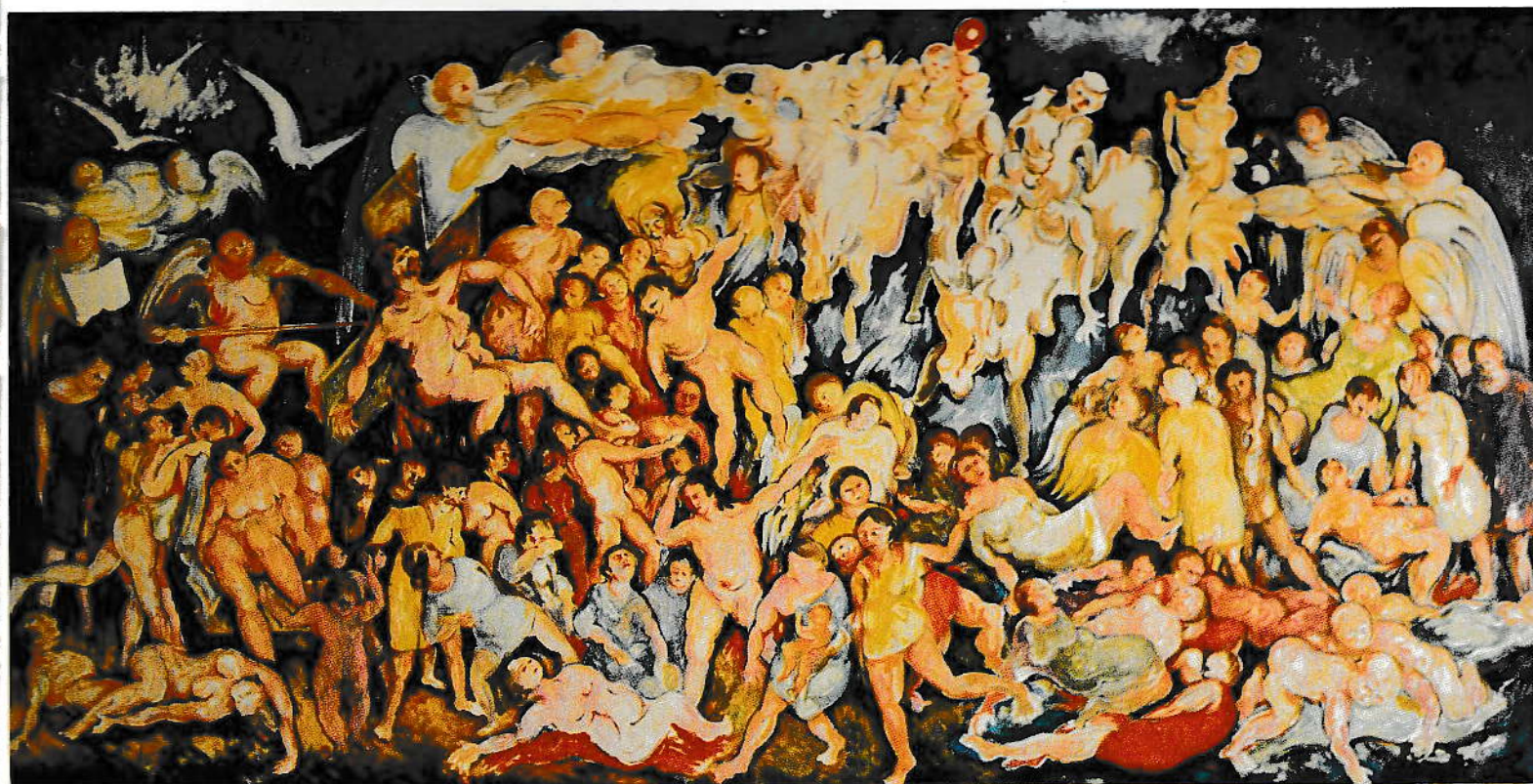
Centro storico in vetrina, 1981, olio su tela, cm. 100x80



Deposizione tra mito e storia, 1982, olio su legno, cm. 375x185



Paesaggio - Collepasso, 1984, olio su tela, cm. 50x60

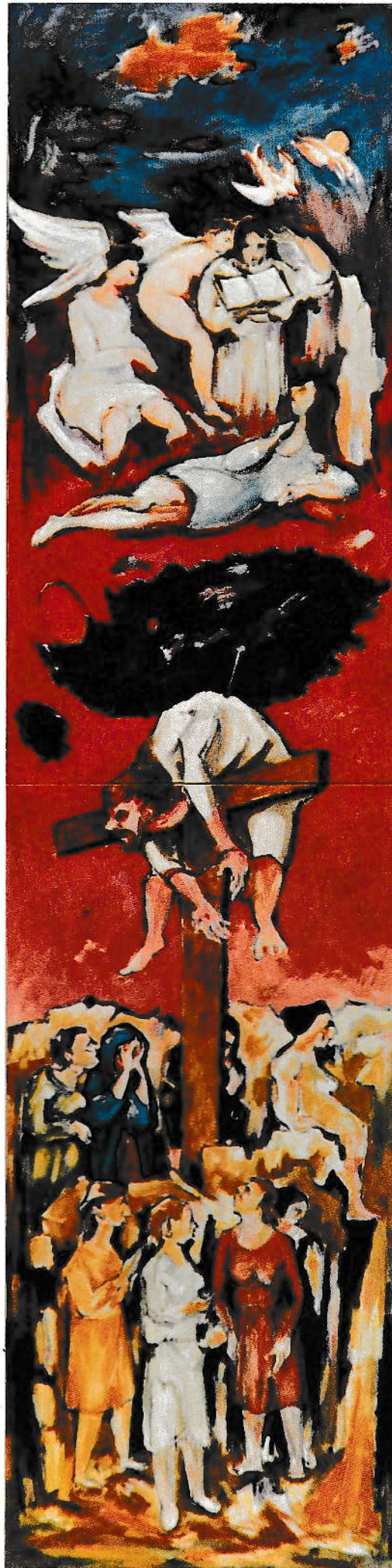


Apocalisse, 1984, olio su legno, cm. 375x185



Natura morta, 1985, olio su tela, cm. 100x70

Il chiodo, 1985, olio su tela, cm. 200x50







Natura morta, 1985, olio su tela, cm. 100x70

Il chiodo, 1985, olio su tela, cm. 200x50

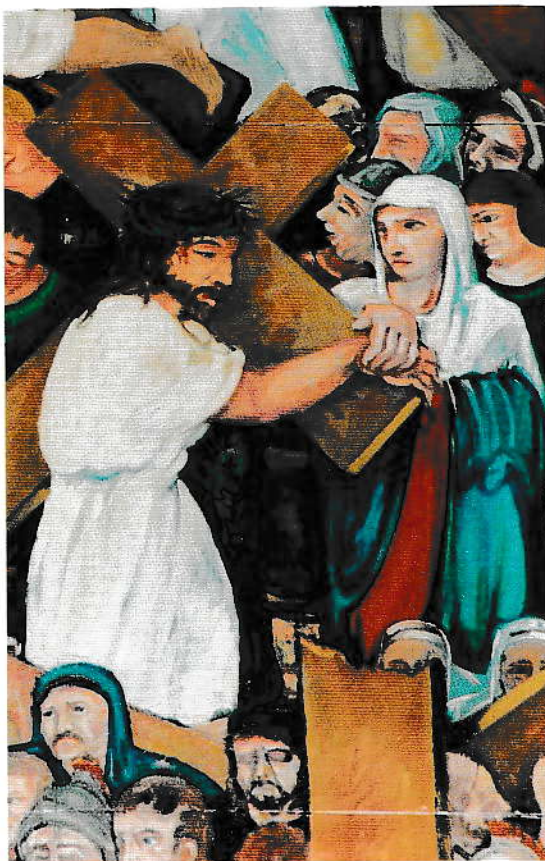


La Passione di Cristo, 1990, olio su tela, cm. 500x300

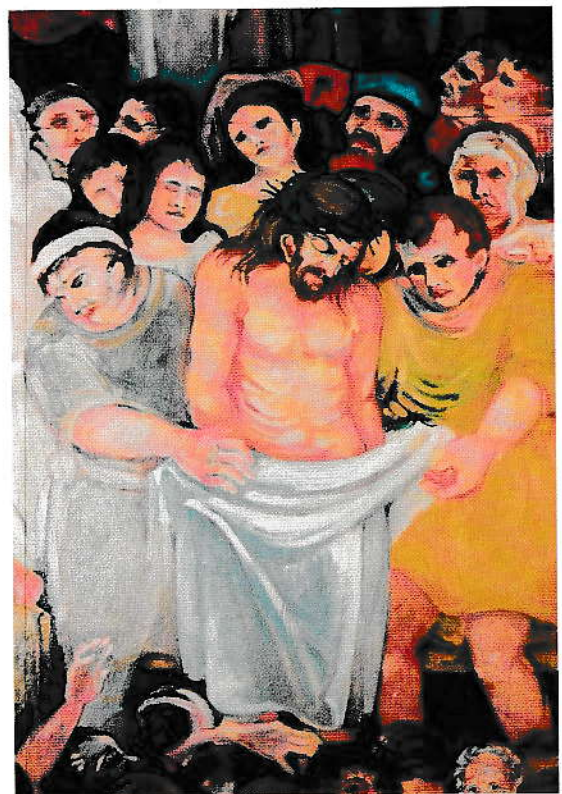
Il Cristo della casa, 1985, olio su tela, cm. 50x120



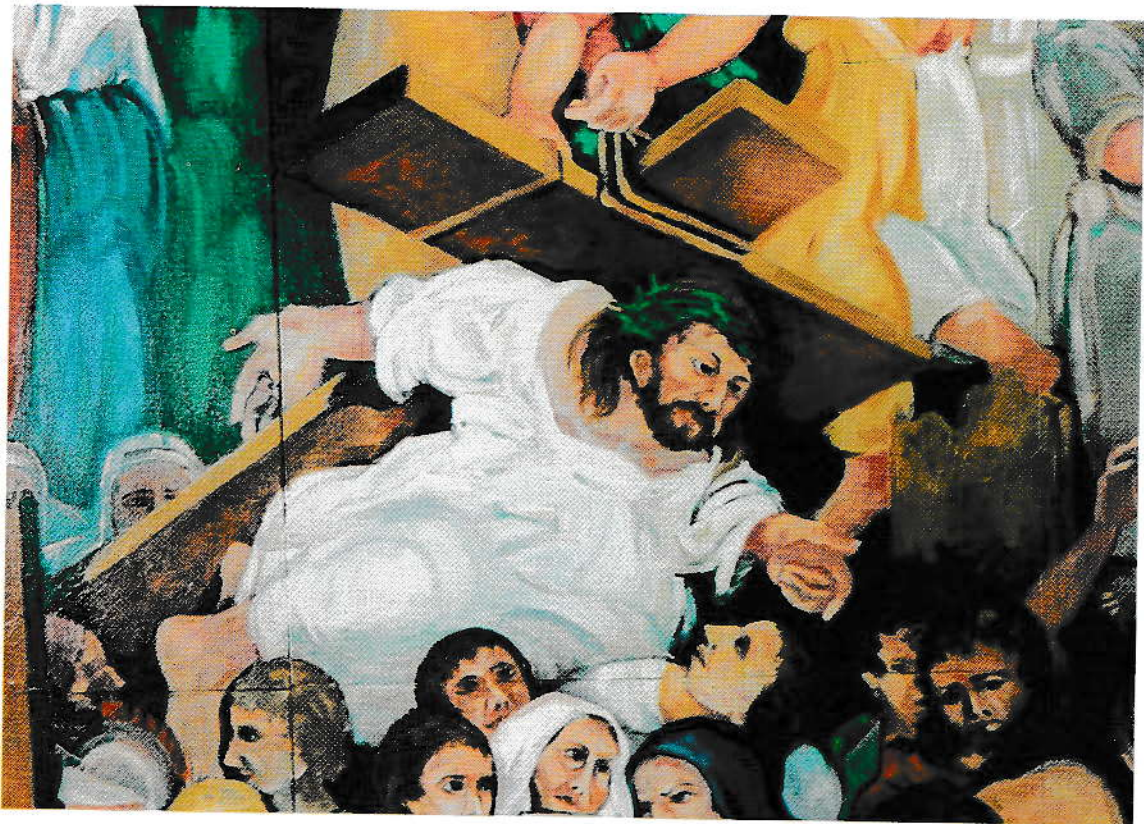
La Passione di Cristo (il Cireneo)



La Passione di Cristo (incontro con la Madre)



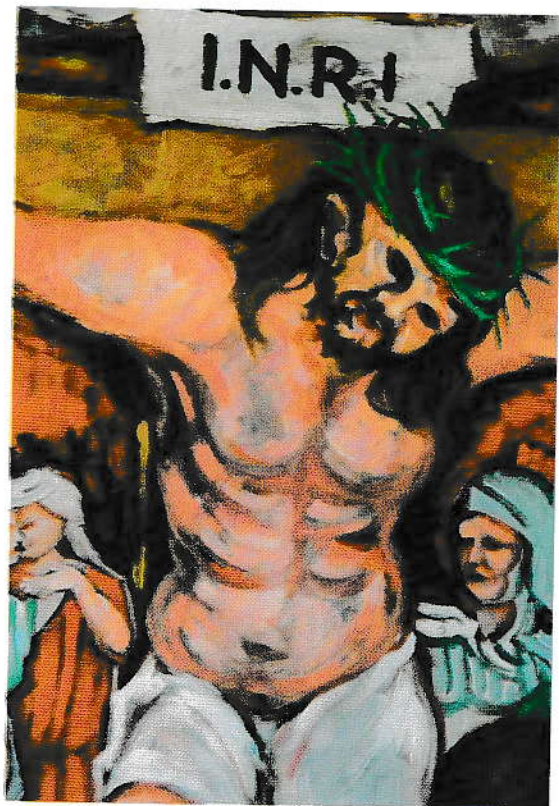
La Passione di Cristo (denudato)



La Passione di Cristo (la caduta)



La Passione di Cristo (il chiodo)



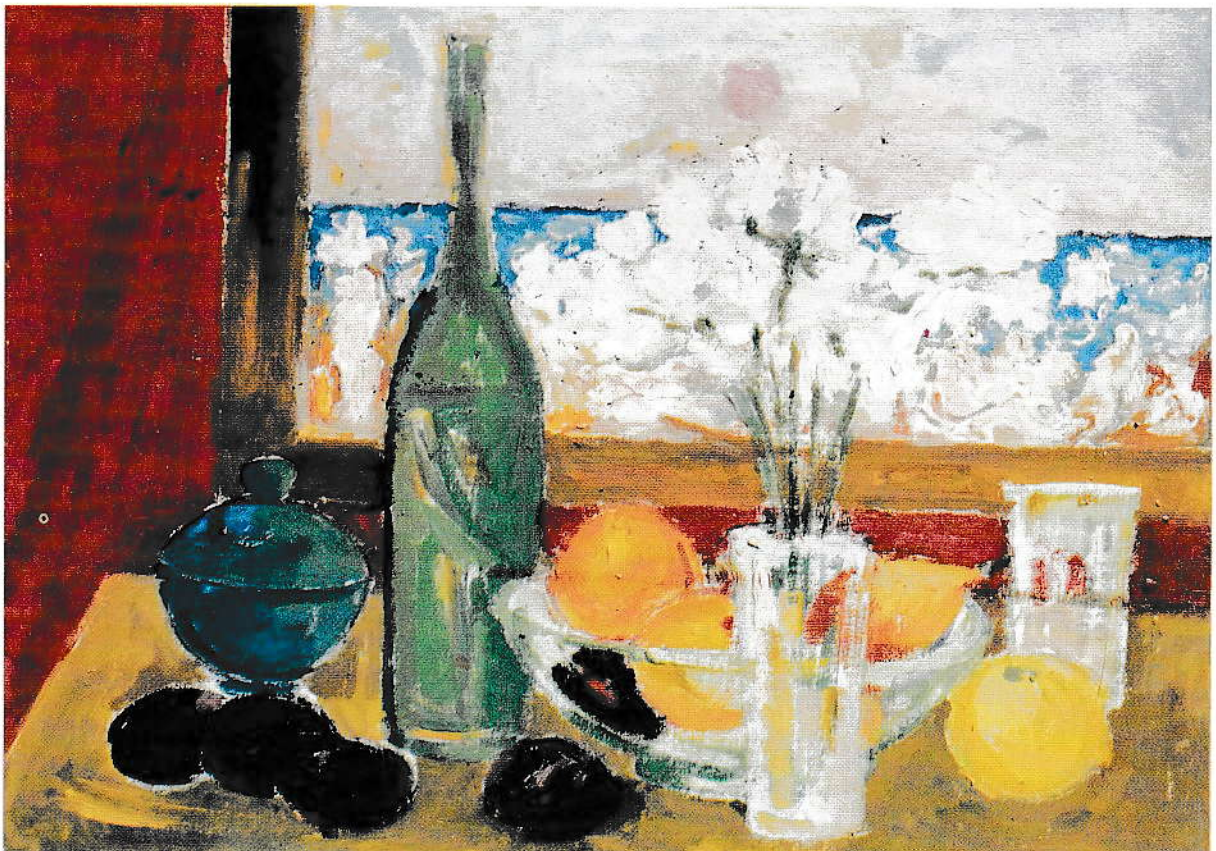
La Passione di Cristo (I.N.R.I.)



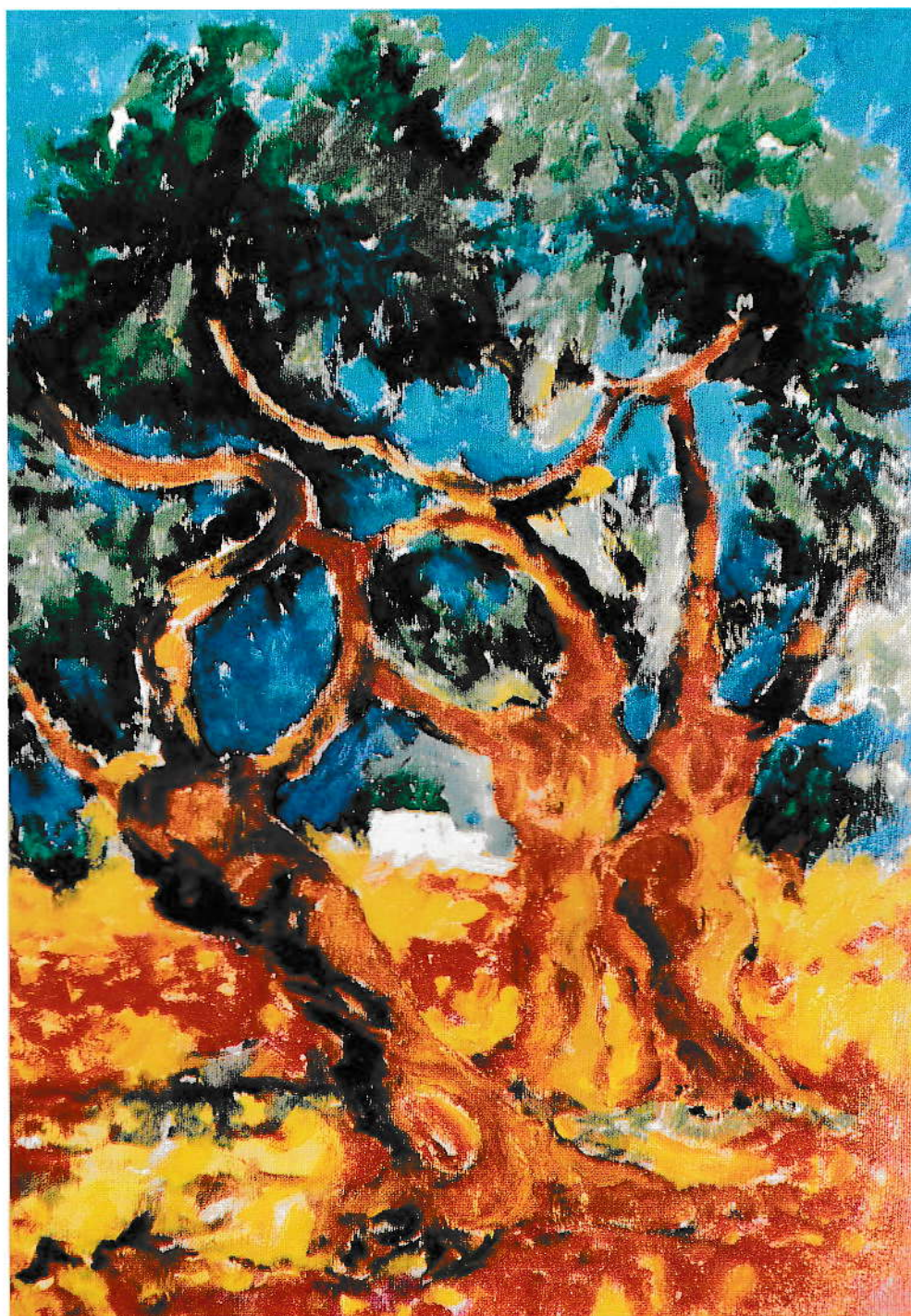
Frutta e opulenza delle rose, 1990, olio su cartone telato, cm. 40x50



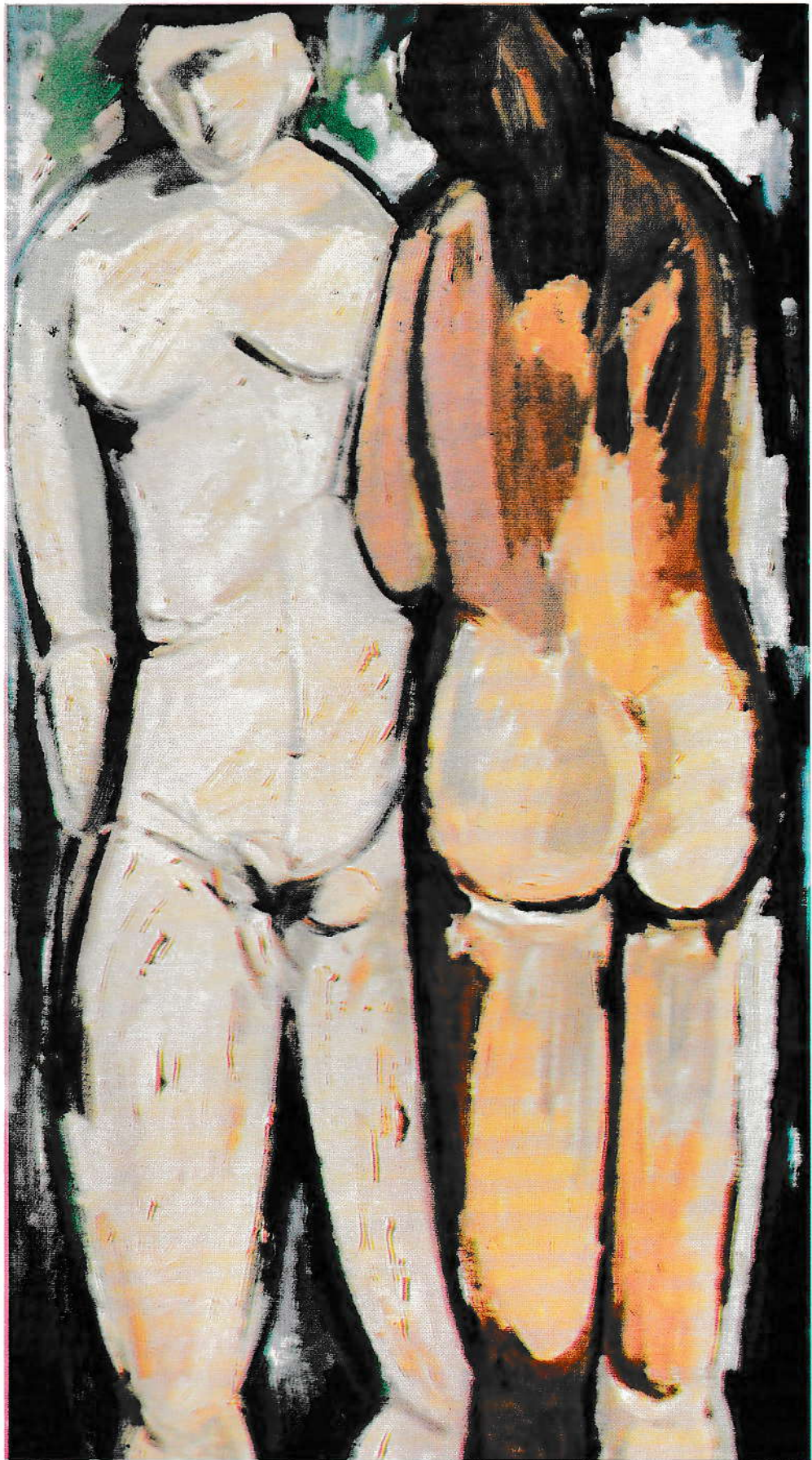
Frutta, fiori e paesaggio, 1992, olio su cartone telato, cm. 70x50



Interno - Natura morta, 1992, olio su cartone telato, cm. 70x50



Trittico dell'ulivo (particolare), 1993, olio su tela, cm. 105x50



Decadenza, 1993, olio su tela, cm. 50x90





Natura morta, 1946, acquerello, cm. 20,5x26,5



Natura morta, 1946, tempera, cm. 45x33



Omaggio a Shakespeare, 1948, tempera, cm. 38x29



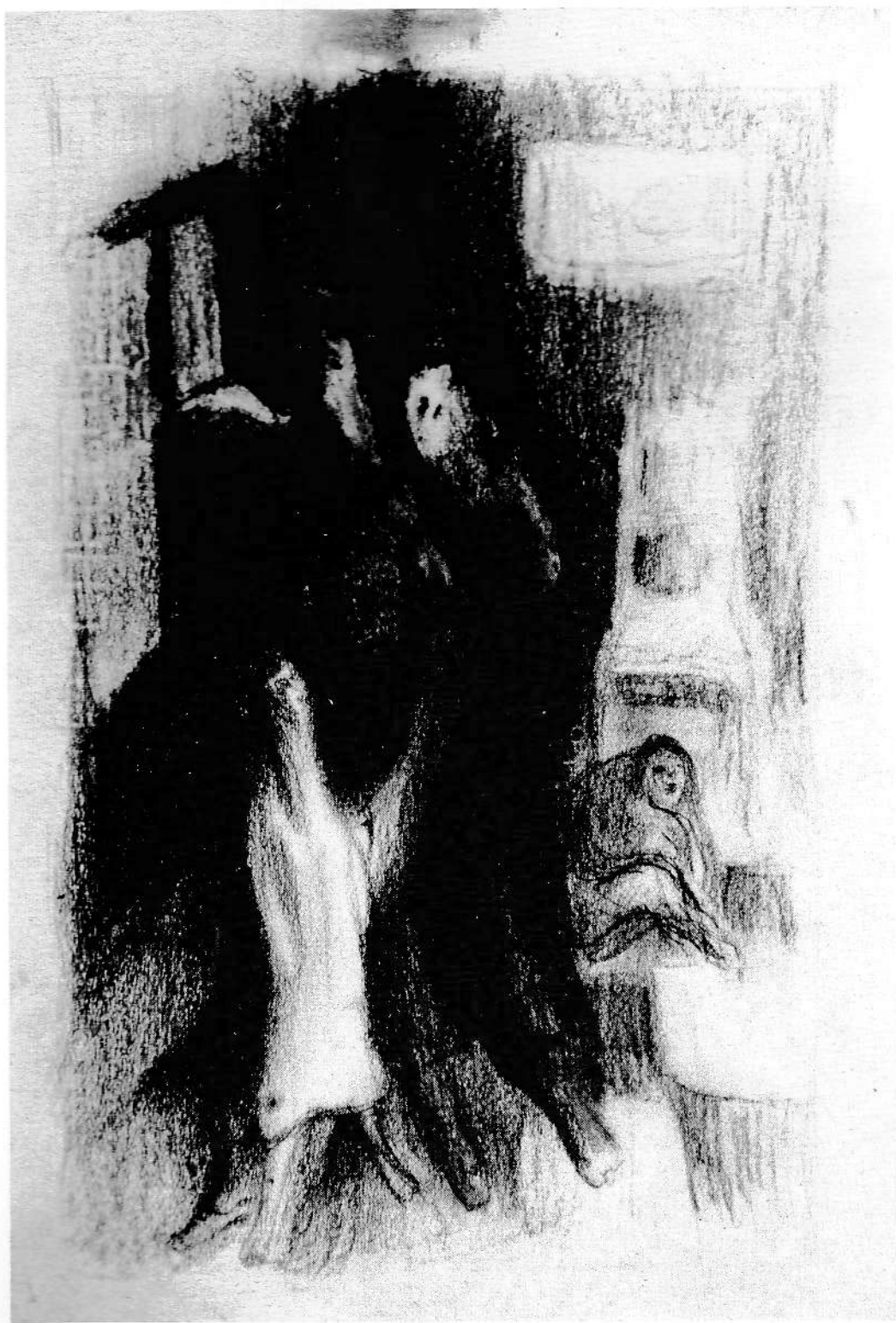
Le messi, 1949, matita, cm. 16x18



Verso la campagna, 1949, matita, cm. 16x18



Interno con figura, 1950, inchiostro, cm. 16x24



Famiglia, 1950, pastello, cm. 22x32



Maternità, 1950, pastello, cm. 20x27



L'irroratore, 1950, macchia d'inchiostro, cm. 14x22





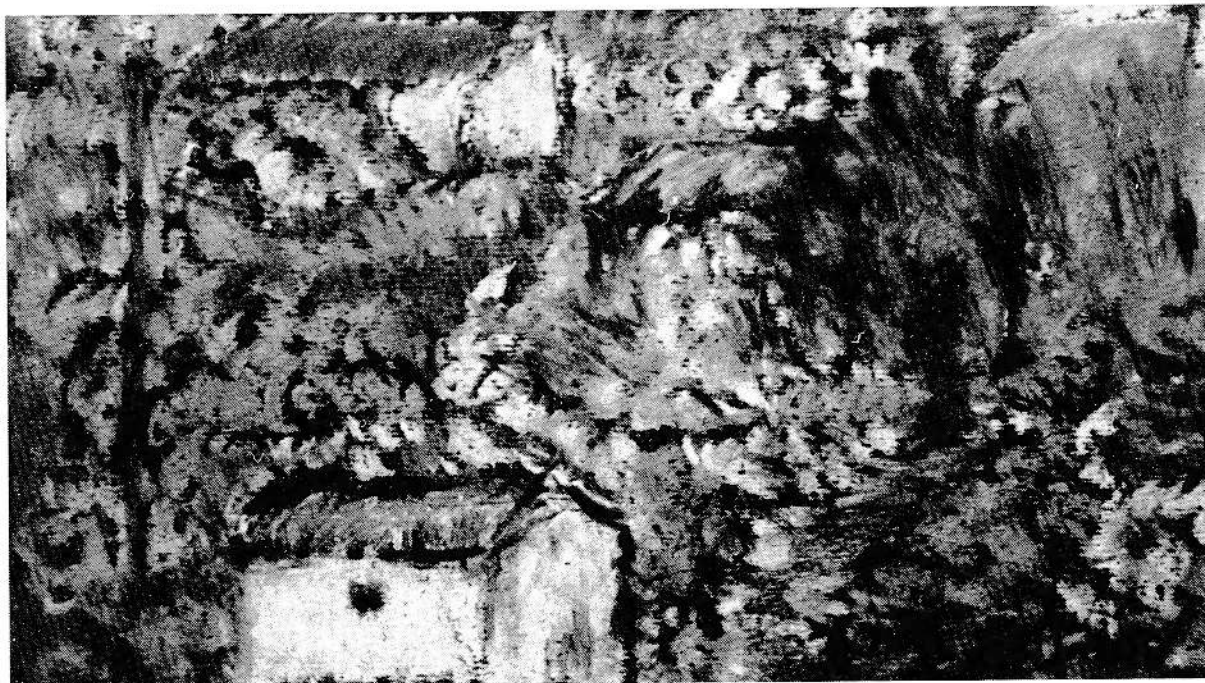
La raccoglitrice, 1950, macchia d'inchiostro, cm. 14x16



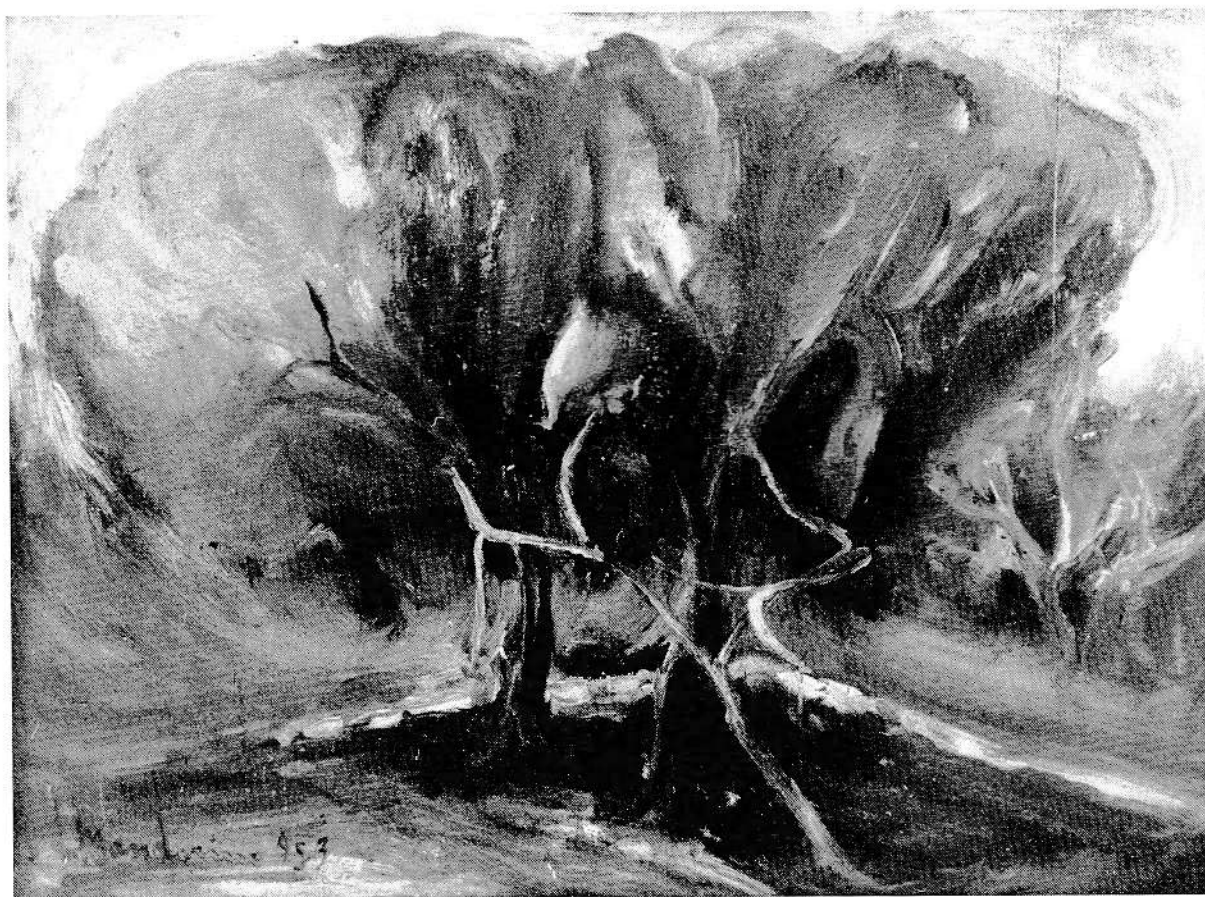
Paesaggio con albero secco, 1952, olio su faesite, cm. 20x30



Riposo in campagna, 1952, tempera, cm. 48x33



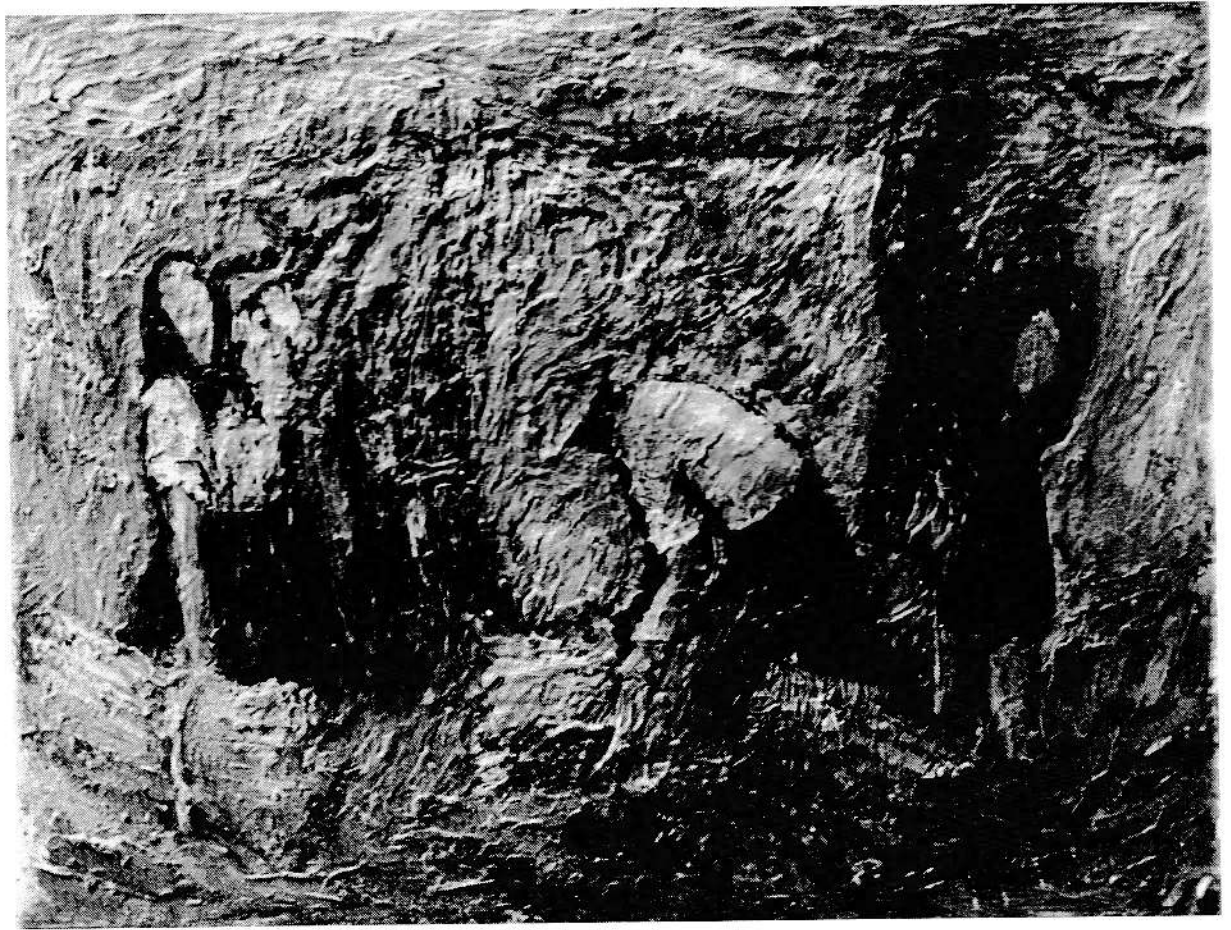
Paesaggio (omaggio a Ciardo), 1952, pastello, cm. 16,5x10



La chiusura, 1953, olio su compensato, cm. 40x30



Primavera salentina, 1954, olio su faesite, cm. 24x34



Estate, 1955, olio su faesite, cm. 40x30

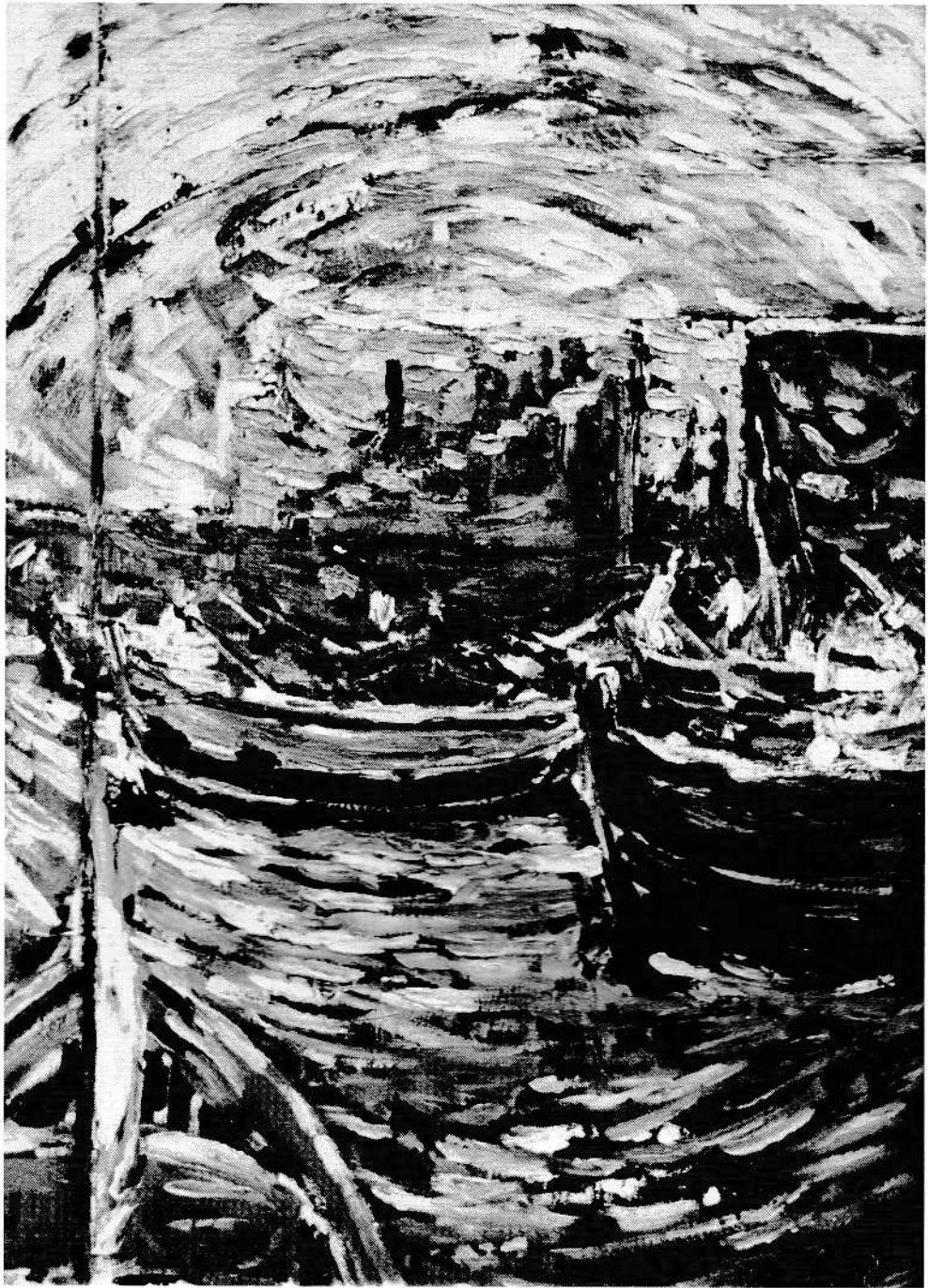


Famiglia di contadini, 1956, tempera, cm. 15x30

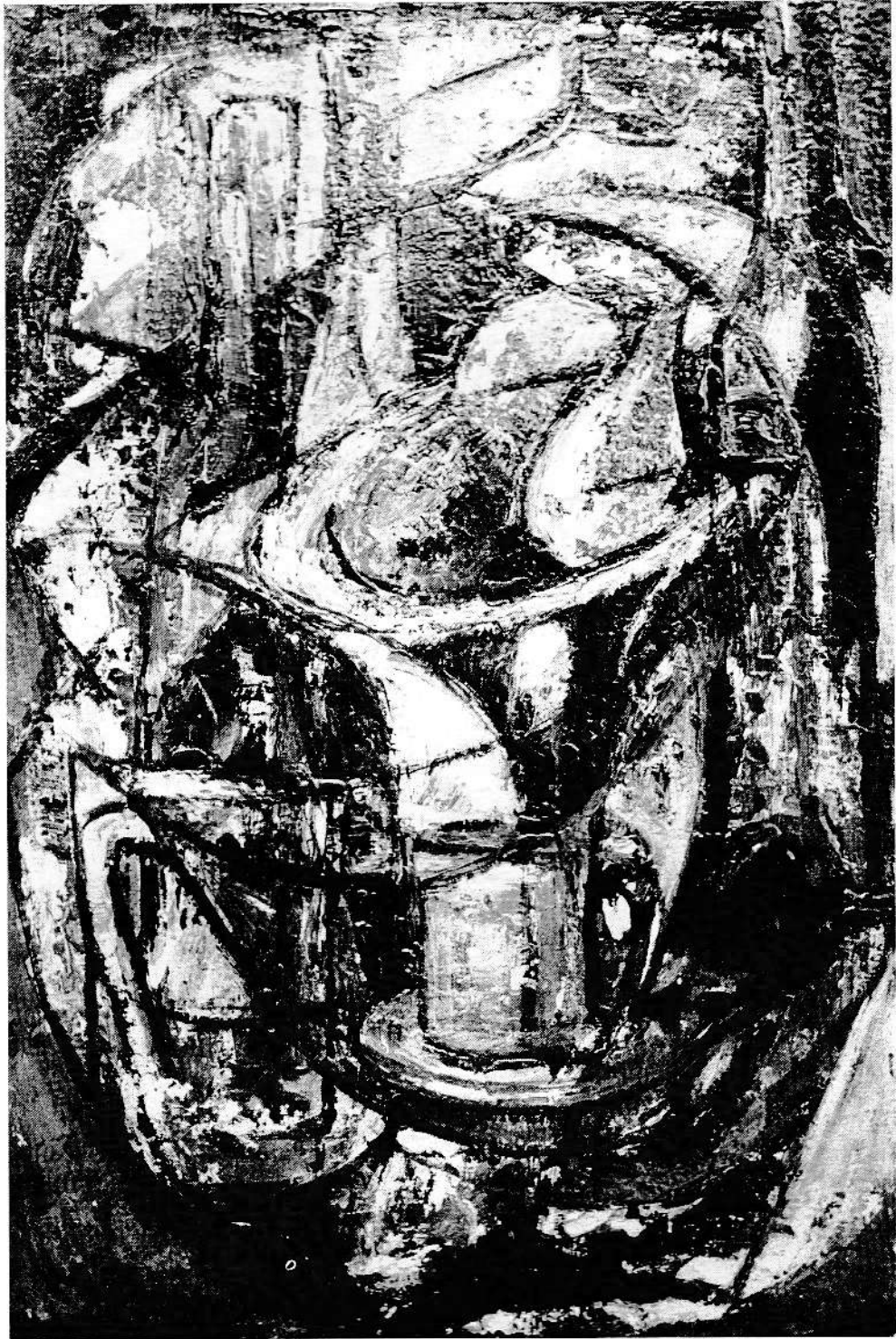


Fiori, 1957, olio su tela, cm. 50x70

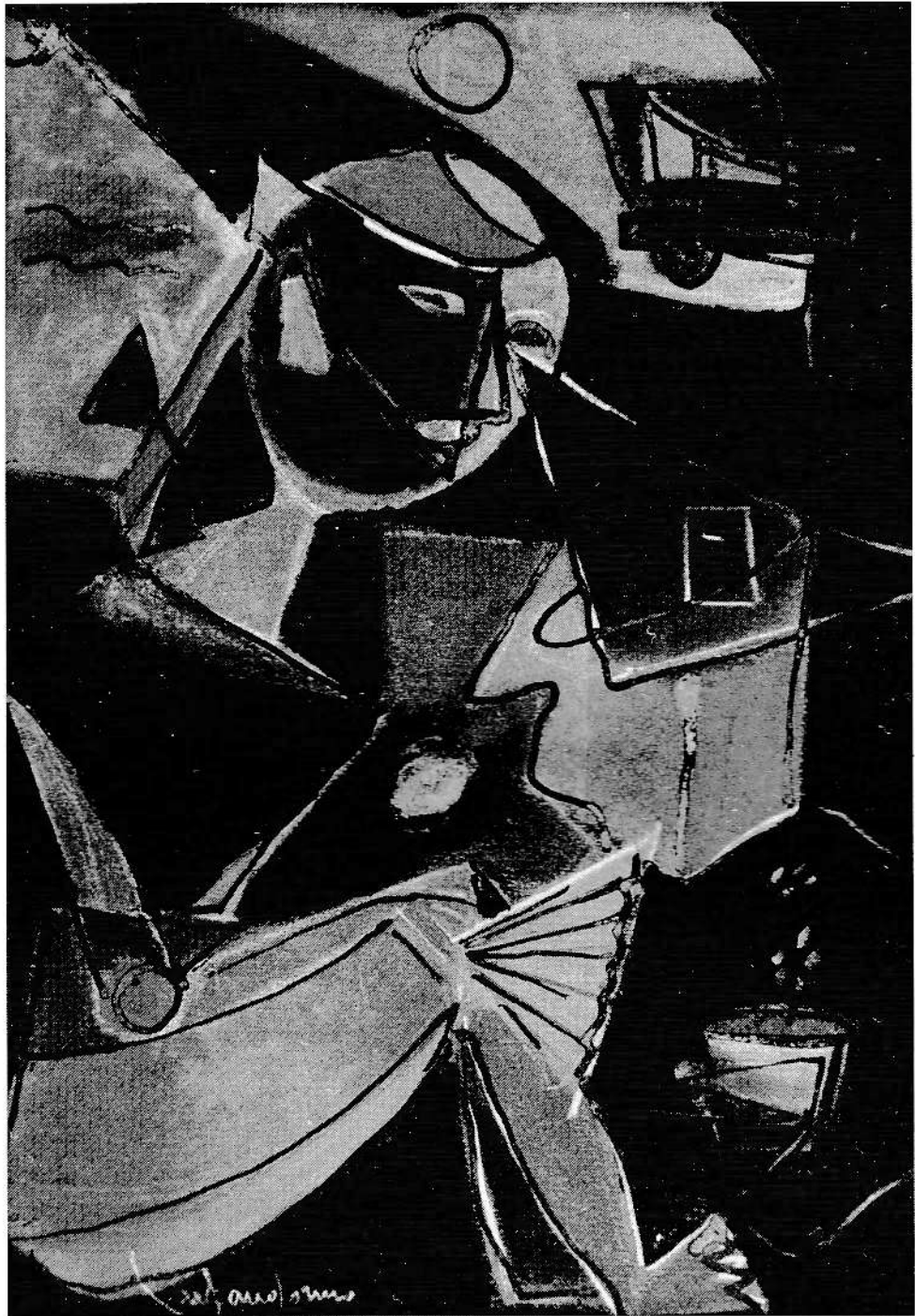




Marina di Castro, 1958, olio su tela, cm. 50x70



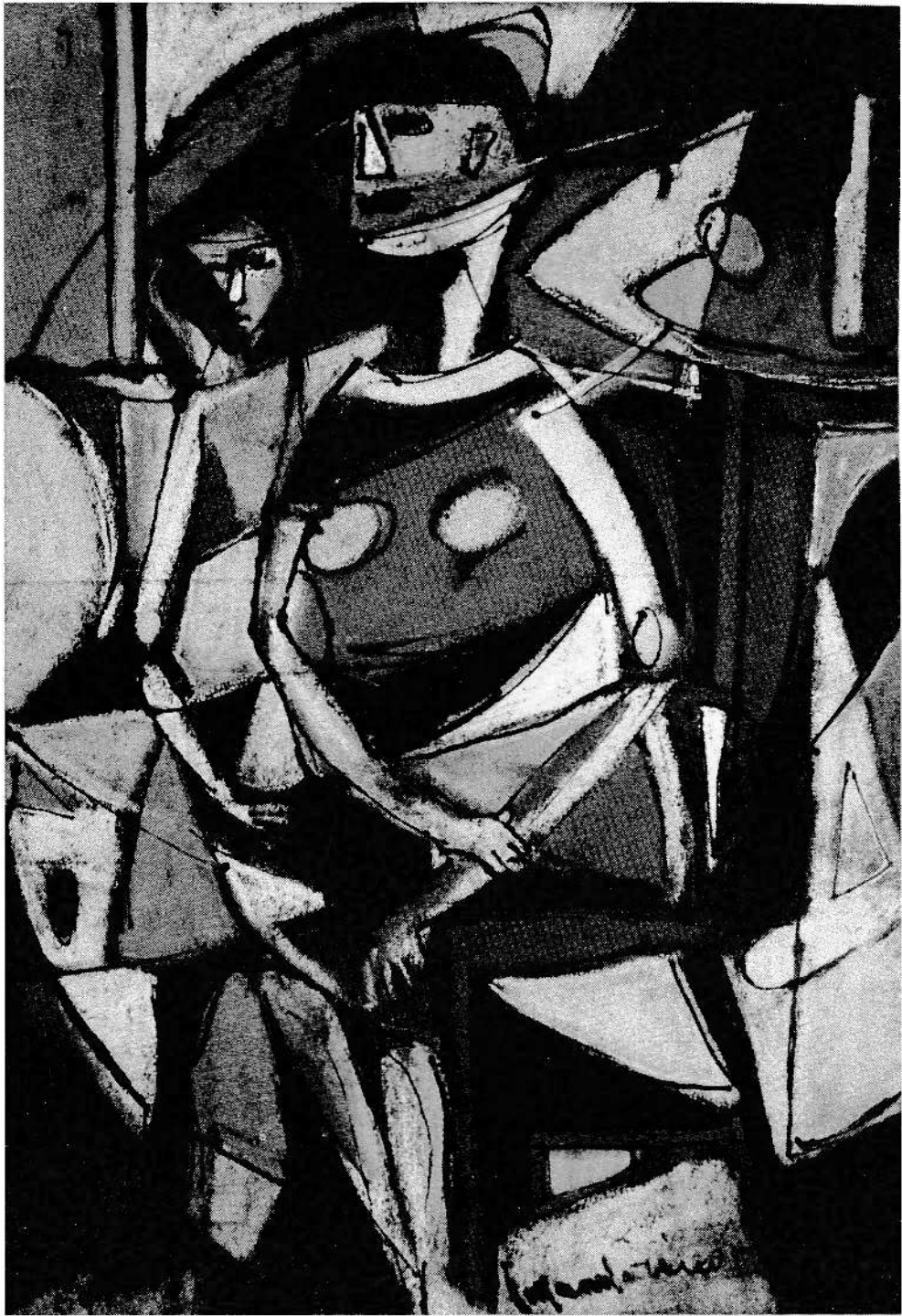
Piani e strutture - Natura morta, 1958, olio su cartone telato, cm. 40x60



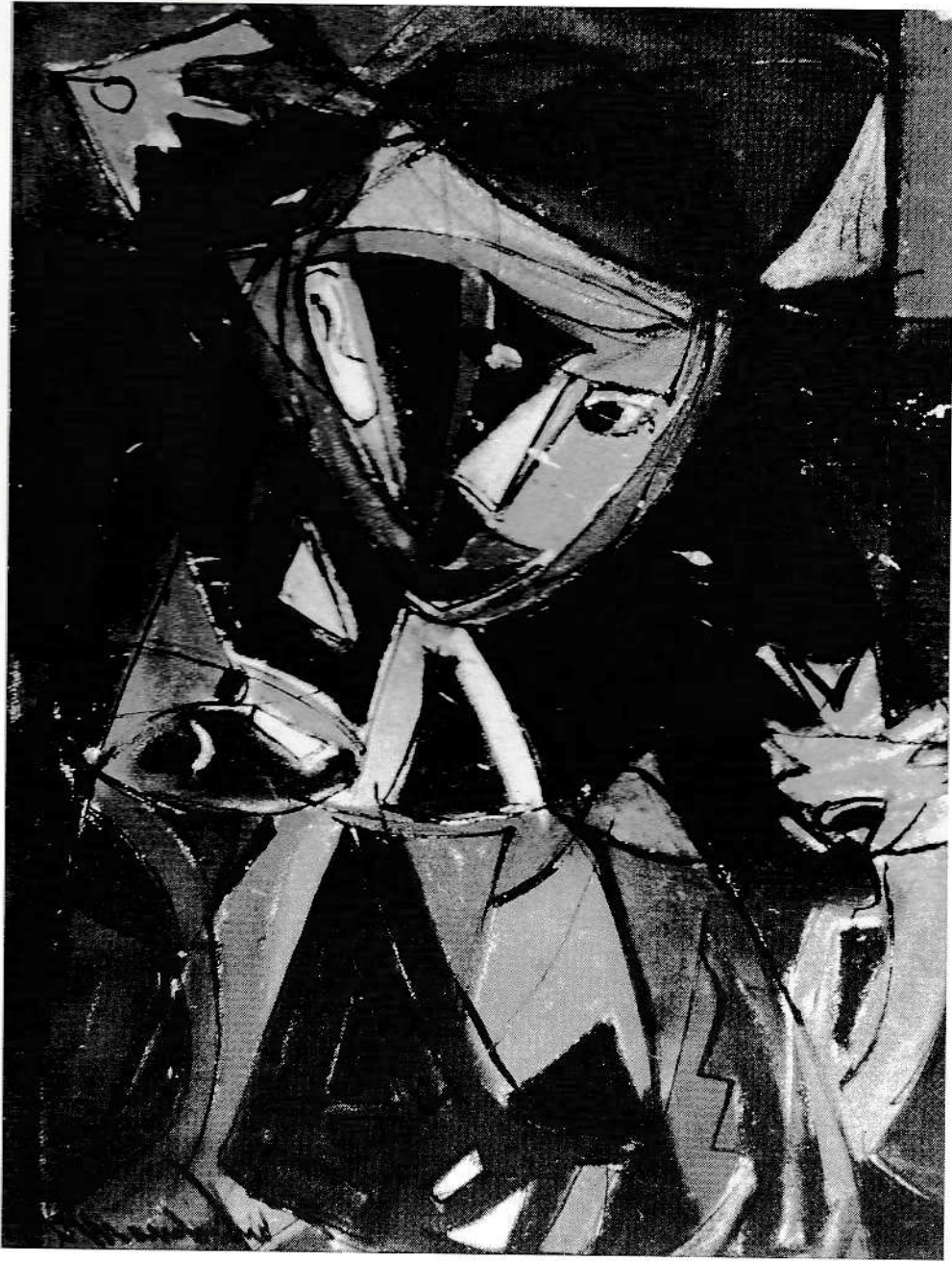
Bambina con ventaglio, 1959, pastello, cm. 23x32



La scolara dal colletto bianco, 1959, pastello, cm. 23x32



Interno con figure, 1959, pastello, cm. 32x46



Maternità, 1959, pastello, cm. 45x65